



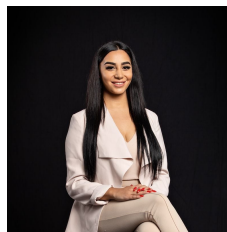
### 6002/228 La Trobe Street Melbourne VIC

1 1

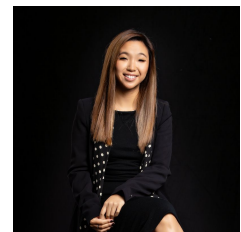
Aurora is Melbourne CBD's tallest and most significant mixed-use development with a direct underground connection to the Melbourne Central Train Station and the city's largest continuous retail precinct.

**View** : <https://www.innerrealestate.com.au/lease/vic/inner-city/melbourne/residential/apartment/6138979>

Aurora Melbourne Central provides unrivaled access to the best that Melbourne offers. Its cosmopolitan cluster of food and beverage offerings, retail hub, street-level arcade, and laneway activation reflect this vibrant city's determination to live well.



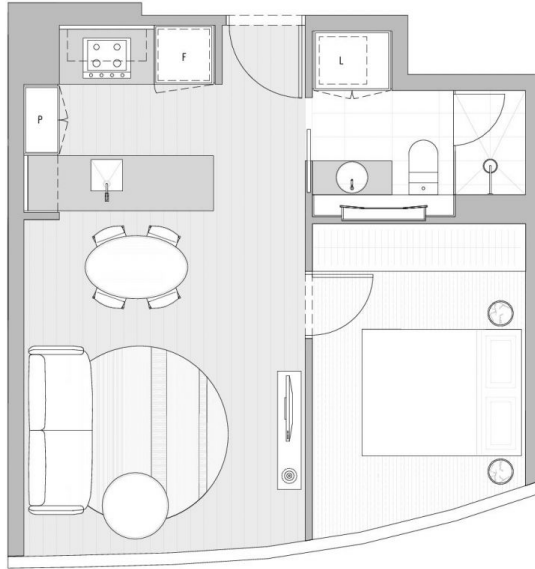
**Maha Yehia**  
0448 019 444



**Hayley Tran**  
+61 3 9804 5551

Immediately below the residential apartments is the Stratus Club, accessible for all residents to use.

25m indoor lap pool  
Sauna  
Steam room



LEVEL 35-65		UNIT 02 & 10	
LITTLE LA TROBE STREET			
			
LA TROBE STREET			
			
<b>1 BEDROOM / 1 BATHROOM</b>			
APARTMENT		42.9m <sup>2</sup>	
WINTERGARDEN		0.0m <sup>2</sup>	
<b>TOTAL</b>		<b>42.9m<sup>2</sup></b>	

These floor plans were prepared before the completion of the design, engineering and construction elements of the project. The floor plans are intended only as a guide and an aid to further investigations by potential purchasers and are subject to change in relation to areas and dimensions, floor layout, design, engineering, fittings and specifications. The areas and dimensions set out in the floor plans are calculated using the Property Council Method of Measurement for Residential Property current at the date of preparation of the floor plans. Prospective purchasers should make their own enquiries and obtain their own independent legal advice in relation to the contract of sale.