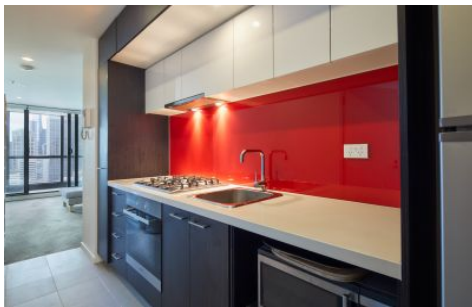




INNER REAL ESTATE NEXTRE



2206/5 Sutherland Street Melbourne VIC

2 2 2

Be dazzled by the city lights, the sophistication and the urban essence on display in this light-filled apartment high up in the exclusive Melbourne Sky, in the heart of Melbourne's CBD.

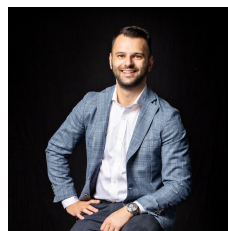
This Level 22 apartment overlooking Little Lonsdale St features 2 spacious bedrooms with walk-in robes, 2 sleek bathrooms and an irresistible 2 secure car parks, befitting the standard of this iconic build.

To reside in Melbourne Sky, surrounded by world-class shopping, cafes, restaurants and educational facilities, is to immerse one's self in the heart of Melbourne.

See the Arts Centre Spire and Eureka Tower from the deluxe stone and stainless steel kitchen, from the spacious lounge and from the observation balcony. Walk to Melbourne Central, Emporium Melbourne, free city trams, Hardware Lane, Bourke Street Mall, Queen Victoria

Price : \$ 600,000

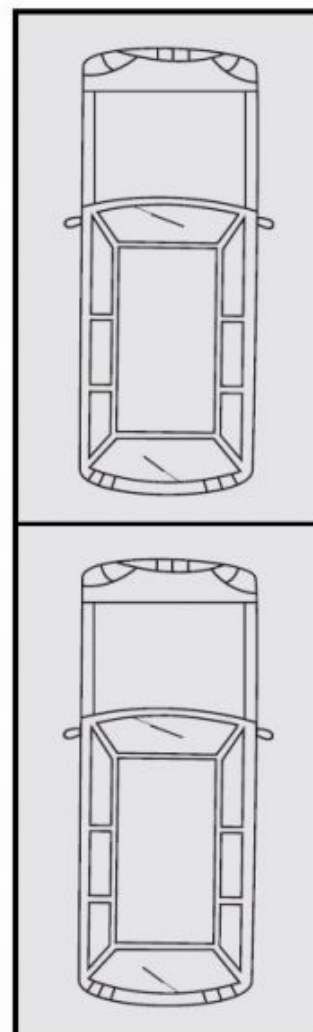
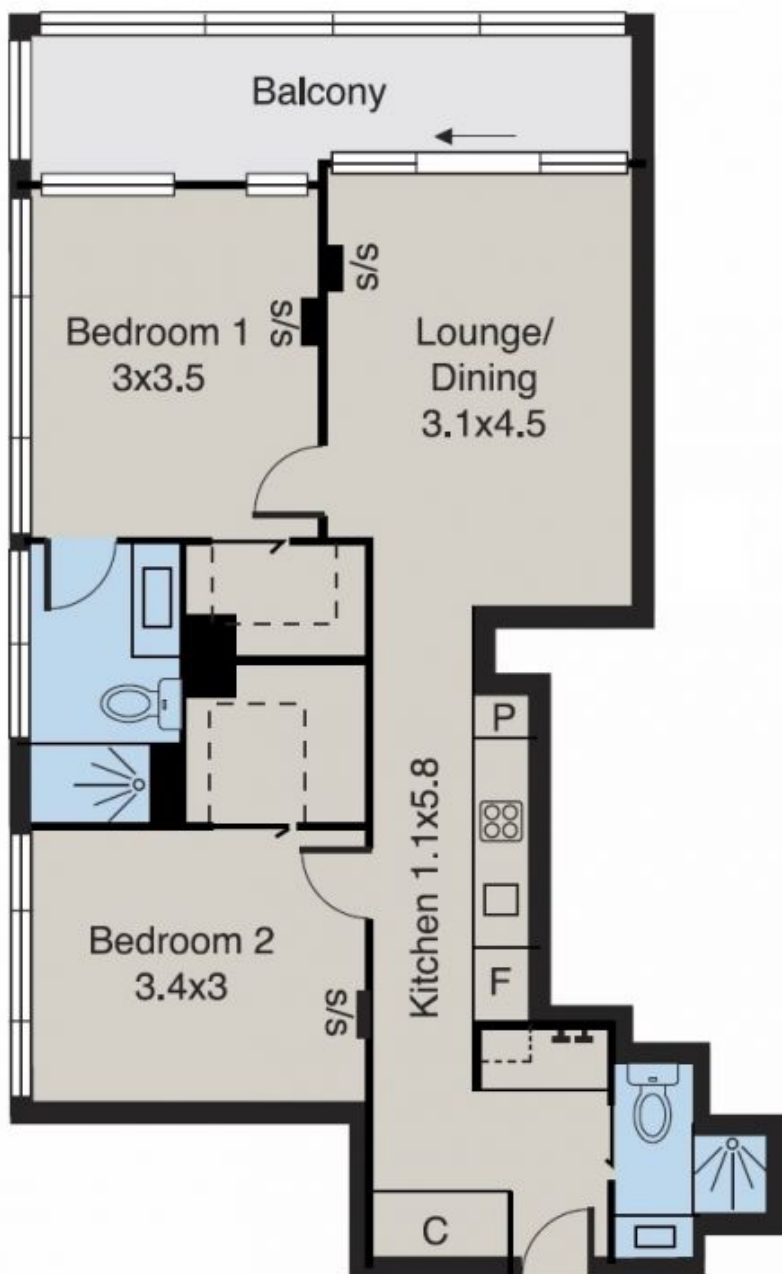
View : <https://www.innerrealestate.com.au/sale/vic/inner-city/melbourne/residential/apartment/6139007>



Anthony Cimino
+61 3 9804 5551



Jonathan Mallas
+61 3 9804 5551



Tandem
Car Spaces
(Not in Position)