



1104/568 St Kilda Road Melbourne VIC

1 1 1

This one bedroom apartment offers spacious open plan living, a good size balcony, central bathroom, modern kitchen, European laundry, split system heating and cooling in the bedroom and lounge room and undercover car space with remote control.

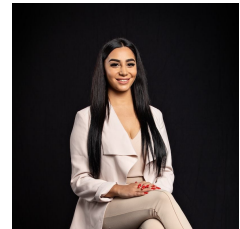
Ideally located, within easy reach of the CBD, Albert Park Lake and public transport.

Including: gymnasium, impressive lobby and Italian cafe/restaurant on ground floor.

View : <https://www.innerrealestate.com.au/lease/vic/inner-city/melbourne/residential/apartment/6139012>



Izabella Frattezi Ramos
0418 511 885



Maha Yehia
0448 019 444