



INNER REAL ESTATE NEXTRE



58 Ellsworth Crescent Camberwell VIC

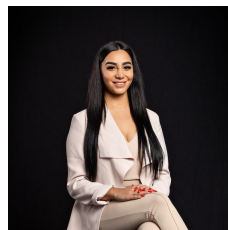
3 2 1

****ARRANGE AN INSPECTION TIME ONLINE - DETAILS BELOW****

Impressive double storey townhouse located in the "Realm Development" in the quiet, leafy suburb of Camberwell, features double glazing, zoned heating and cooling, alarm system, remote control single lock up garage plus off street parking, surrounded by parks, easy access to public transport.

Ground floor consists of a spacious lounge room facing north allowing the natural light to filter throughout, a gourmet kitchen containing Miele stainless steel appliances, glass splash back, walk-in pantry - including dishwasher and stone bench tops, sliding glass doors lead out onto a low maintenance paved rear yard ideal for easy summer entertaining, powder room, laundry and internal

View : <https://www.innerrealestate.com.au/lease/vic/east/camberwell/residential/house/6139023>



Maha Yehia
0448 019 444



Kayani Shahzeb
+61 3 9804 5551