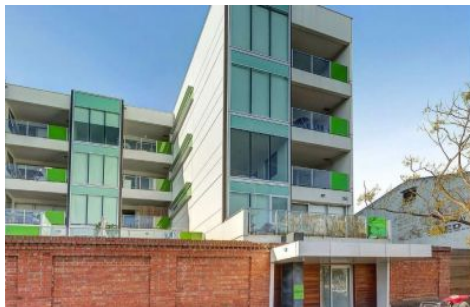






INNER REAL ESTATE

NEXTRE



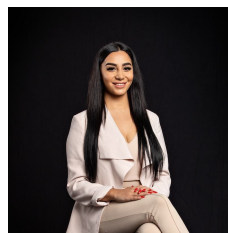
410/64 Macaulay Road North Melbourne VIC

2  1  1 

8 MONTHS LEASE ONLY

Opposite the North Melbourne Football Ground in the exclusive Pumphouse complex, this impressive top-floor apartment presents an idyllic city-fringe lifestyle with its generous design, quality features and elevated outlook. The light-filled interior comprises two double bedrooms (both with robes) and modern central bathroom, open living/dining area leading out to an undercover terrace to enjoy the views. Add to this a stone-bench kitchen with Blanco appliances, split-system heating and cooling, European laundry, video intercom, plus lift to entry foyer and undercover parking space. All within walking distance to supermarket, North Melbourne Recreation Centre, Abbotsford Street trams, Errol Street cafes and shops, close to North Melbourne Station, schools (zoned to University HS) plus Parkville's hospital and university

View : <https://www.innerrealestate.com.au/lease/vic/inner-city/north-melbourne/residential/apartment/6139026>

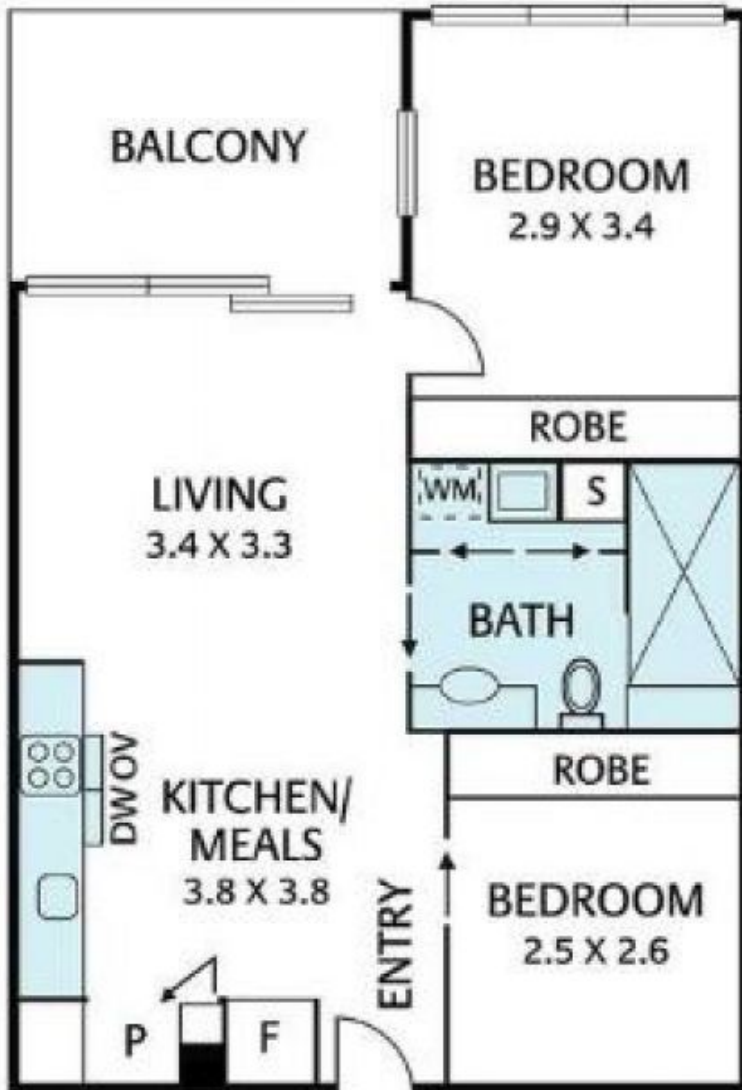


Maha Yehia
0448 019 444



Kayani Shahzeb
+61 3 9804 5551

<https://www.innerrealestate.com.au>



COVERED
CAR
SPACE

(NOT IN POSITION)