



2/1-5 Lawn Road Noble Park VIC

1 1 1

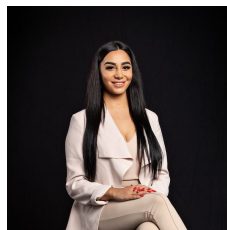
This vast 1 of 4 units is perfectly positioned between Springvale & Noble Park, it is also a convenient 1-minute walk to Sandown train station. The features include:

- good sized bedroom
- Open plan living area with floorboards
- Brand-new stove oven.
- Plenty of storage space

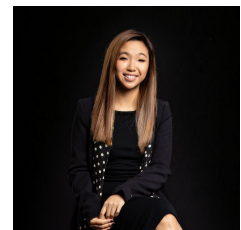
The garden beds offer a perfect place to grow, flowers, fresh fruit and vegetables!

The unit is within walking distance of schools, shops & bus stops.

View : <https://www.innerrealestate.com.au/lease/vic/south-east/noble-park/residential/unit/6139029>



Maha Yehia
0448 019 444



Hayley Tran
+61 3 9804 5551