

1711/135 A'beckett Street Melbourne VIC

1 1 1

Sophisticated and supremely central, this Level 17 apartment in the designer EQ Tower brings vibrant Melbourne CBD living to the fore.

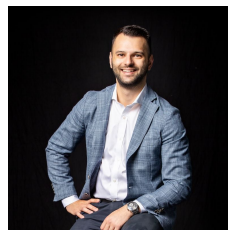
This luxury 1-bedroom domain features a study, a secure car park and a dazzling city view.

It rests within a striking building offering exceptional amenities including a 25m outdoor pool and an outdoor spa, a gymnasium, a sauna, lounges, karaoke suites, a theatre room, a games room and more.

A ground-level laneway retail precinct and residents lobby awaits below, while the iconic Queen Victoria Market and the expansive Flagstaff Gardens are a short stroll away.

Walk to RMIT, Melbourne Central, public transport,

View : <https://www.innerrealestate.com.au/sale/vic/inner-city/melbourne/residential/apartment/6139035>



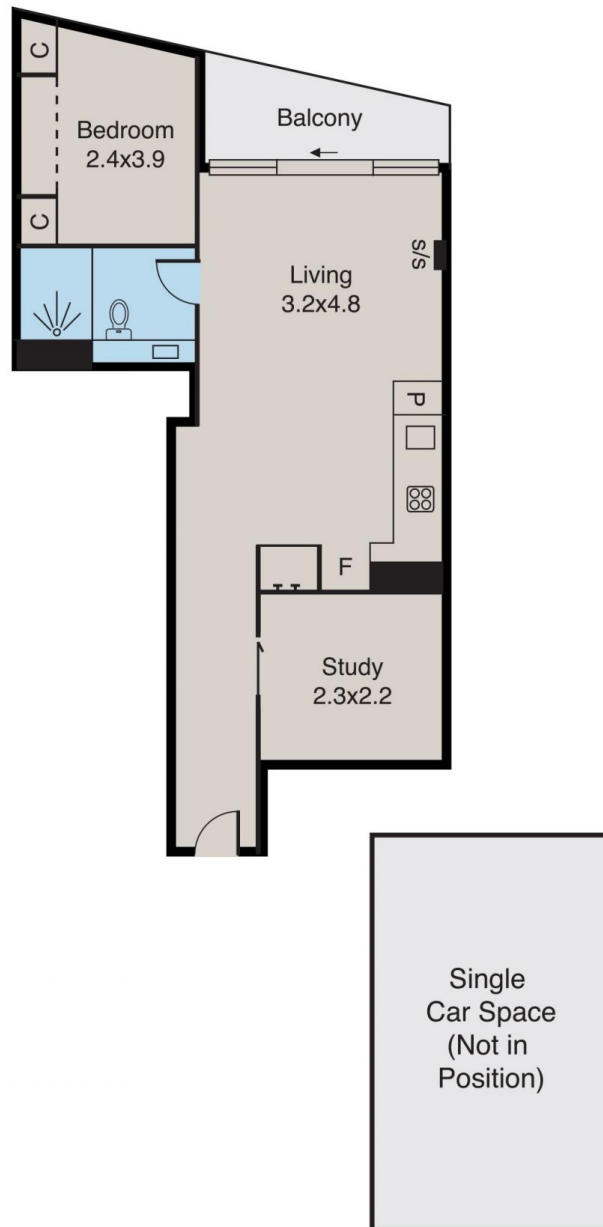
Anthony Cimino
+61 3 9804 5551



Jonathan Mallas
+61 3 9804 5551

Melbourne

1711/135 A'Beckett Street



ALL INFORMATION CONTAINED HERE IN IS GATHERED FROM SOURCES WE BELIEVE TO BE RELIABLE. HOWEVER WE CANNOT GUARANTEE ITS ACCURACY AND INTERESTED PERSONS SHOULD RELY ON THEIR OWN ENQUIRIES. DIMENSIONS ARE APPROXIMATE.