



# INNER REAL ESTATE NEXTRE



**3.8/1045-1059 Heidelberg Road Ivanhoe VIC**

**2  1  1 **

#### TO INSPECT THIS PROPERTY:

Register click the "Contact Agent" button and send through an enquiry. One of our friendly team members will contact you once an inspection time is available.

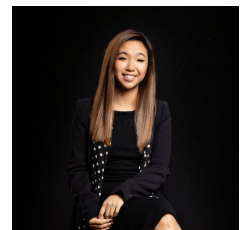
This beautifully finished designer apartment in Ivanhoe is nestled in a fantastic neighbourhood with train station and bus stop right at your doorstep. Within walking distance to the Ivanhoe Shopping Strip and easy access to Upper Heidelberg Road where quality restaurants and cafes are located, this apartment puts you in an excellent location.

The contemporary apartment is light, bright and presents brand new. It features seamless flow between indoor and outdoor areas, massive terrace balcony overlooking this peaceful suburb and city skyline to the south, open plan living/dining with oak timber flooring, sleek kitchen

**View :** <https://www.innerrealestate.com.au/lease/vic/north/ivanhoe/residential/apartment/6139041>



**Maha Yehia**  
**0448 019 444**



**Hayley Tran**  
**+61 3 9804 5551**

<https://www.innerrealestate.com.au>