



INNER REAL ESTATE NEXTRE



1/2 May Park Avenue Ashwood VIC

4 3 2

This family home is sure to impress with its quality finishes and great size.

Offering 4 bedrooms of which 2 are master bedrooms with ensuites, light and bright kitchen with gas cook top and stone benches.

The large open plan living area features polished timber floors, leading to a neat court yard.

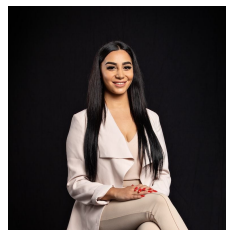
The glistening central bathroom offers a double vanity and there is also a separate powder room on the ground floor.

Heating and cooling, ducted vacuum and security system are also included.

This large home comes complete with a double lock up garage with internal access.

Be quick to secure the beautiful delight as its sure to not last long.

View : <https://www.innerrealestate.com.au/lease/vic/east/ashwood/residential/townhouse/6139049>



Maha Yehia
0448 019 444



Michael Cimino
0400 260 133