



INNER REAL ESTATE NEXTRE



705/31 Spring Street Melbourne VIC

2 1 1

Positioned for effortless city living in the 'Paris end' of the CBD, this light-filled apartment with a secure car space captures Melbourne at its vibrant best.

Steps to Treasury Gardens and a short stroll to many of Melbourne's finest restaurants, boutique bars and chic cafes, this is sophisticated Spring Street living.

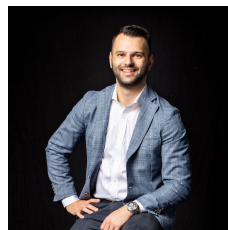
This 2-bedroom, 1-bathroom corner apartment rests within the Philadelphia Building - a modern residential tower in a golden location.

Walk to tram stops, Parliament Station, Southbank, Federation Square, Fitzroy Gardens, boutiques, cinemas and parkland.

An open-plan, window-walled living/dining/kitchen space gazes over Flinders Lane below, while a stunning heated rooftop pool offers sky-high swimming with views - the perfect antidote to the hustle and bustle of life.

See the blue of Port Phillip Bay in the distance on a clear

Price : \$ 770,000
Building Size : 81 sqm
View : <https://www.innerrealestate.com.au/sale/vic/inner-city/melbourne/residential/apartment/6139050>



Anthony Cimino
+61 3 9804 5551

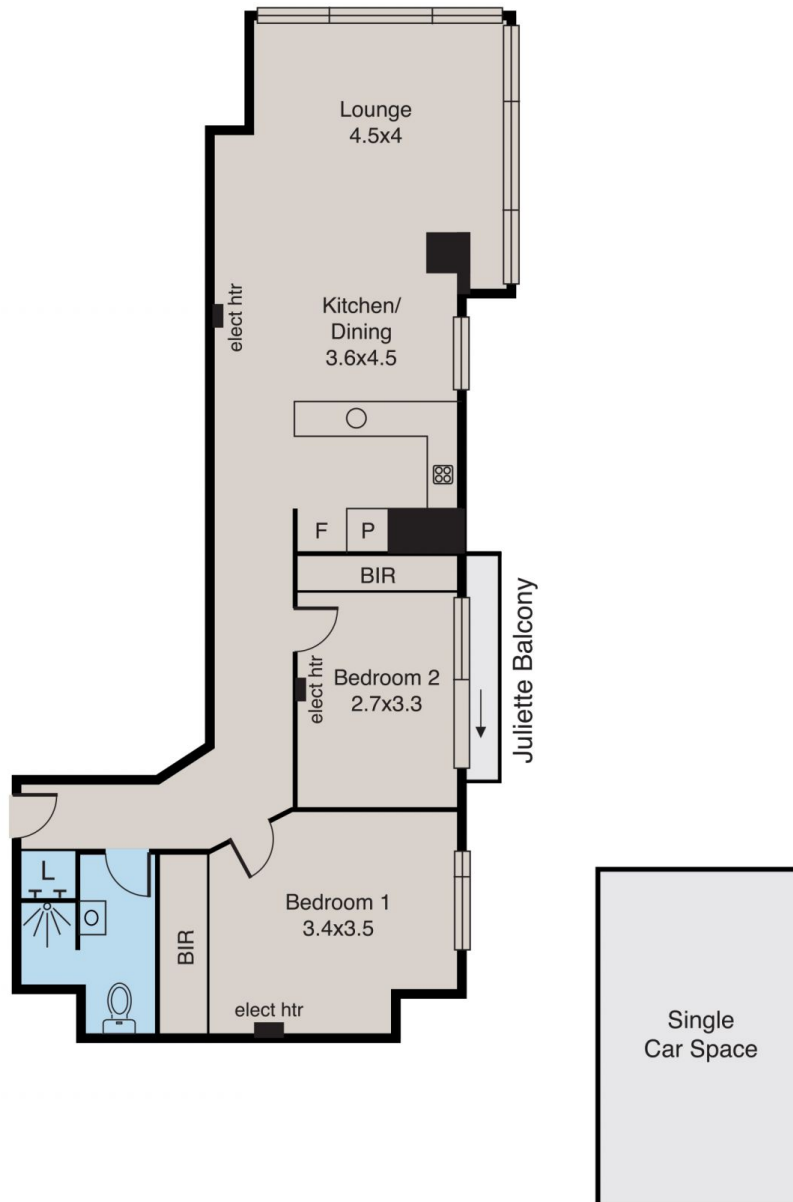


Jonathan Mallas
+61 3 9804 5551

<https://www.innerrealestate.com.au>

Melbourne

705/31 Spring Street



ALL INFORMATION CONTAINED HERE IN IS GATHERED FROM SOURCES WE BELIEVE TO BE RELIABLE. HOWEVER WE CANNOT GUARANTEE ITS ACCURACY AND INTERESTED PERSONS SHOULD RELY ON THEIR OWN ENQUIRIES. DIMENSIONS ARE APPROXIMATE.