



# INNER REAL ESTATE NEXTRE



**1438/139 Lonsdale Street Melbourne VIC**

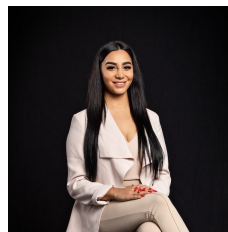
**2  1 **

**TO INSPECT THIS PROPERTY:**

Register click the "Contact Agent" button and send through an enquiry. One of our friendly team members will contact you once an inspection time is available.

Sit on top of the world in this 2 bedroom apartment in the heart of the CBD. Positioned on the 14th floor and fully furnished this apartment has a private balcony capturing stunning city views. open plan living area with a well appointed kitchenette and air-conditioning. This convenient location boasts endless cafes, restaurants and bars, nearby with public transport at your door step and Melbourne Central is also just down the road.

**View :** <https://www.innerrealestate.com.au/lease/vic/inner-city/melbourne/residential/apartment/6139057>



**Maha Yehia**  
**0448 019 444**



**Kayani Shahzeb**  
**+61 3 9804 5551**