



1603/565 Flinders Street Melbourne VIC

1 1 1

Featuring a premier CBD address with a dazzling view over the Yarra River to Southbank, this 16th-floor apartment in Northbank Place is a sky-high city sanctuary.

This modern domain rests above one of Melbourne's most iconic streets, in the heart of the cosmopolitan action, near both Southern Cross Station and Flinders Street Station.

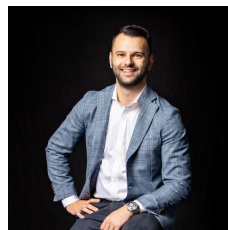
It features a secure carpark, a walk-to-everything address and a balcony with a panoramic view.

An ideal work/study base, investment or getaway, it places you footsteps to tram stops, Crown Casino, the Docklands, riverside restaurants, the Melbourne Convention and Exhibition Centre, bars and cafes and within easy reach of sporting arenas, universities and more.

It is located on the northern bank of the Yarra River, with the lush green of Batman Park below and the majestic blue sweep of Port Phillip Bay on the horizon.

Watch the world go by on South Wharf Promenade and the

View : <https://www.innerrealestate.com.au/sale/vic/inner-city/melbourne/residential/apartment/6139086>



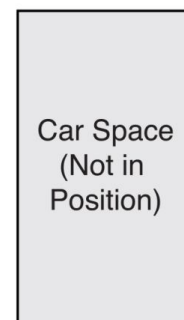
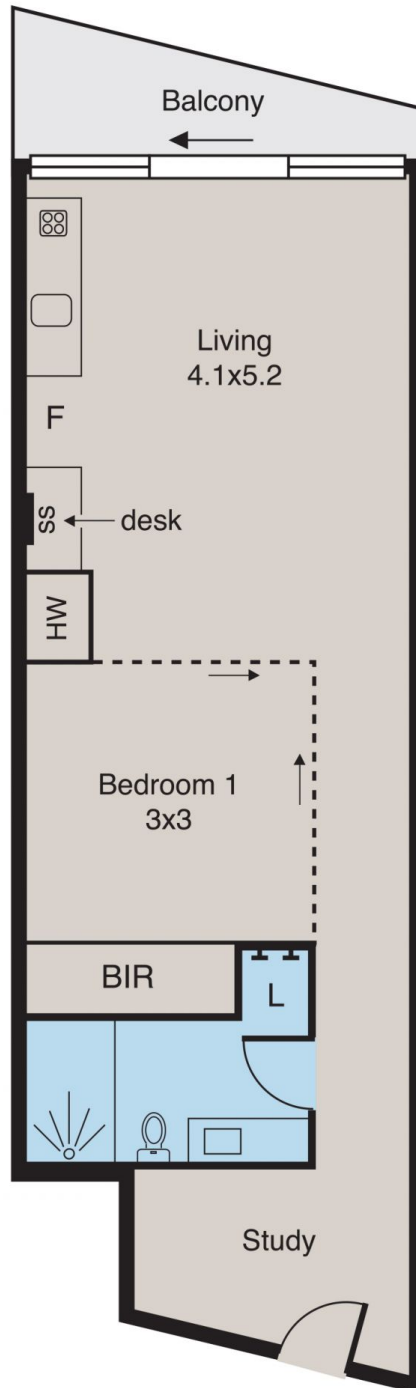
Anthony Cimino
+61 3 9804 5551



Jonathan Mallas
+61 3 9804 5551

Melbourne

1603/565 Flinders Street,



ALL INFORMATION CONTAINED HERE IN IS GATHERED FROM SOURCES WE BELIEVE TO BE RELIABLE. HOWEVER WE CANNOT GUARANTEE ITS ACCURACY AND INTERESTED PERSONS SHOULD RELY ON THEIR OWN ENQUIRIES. DIMENSIONS ARE APPROXIMATE.