



1606/380 Little Lonsdale Street Melbourne VIC

2 1 1

Gazing at the city skyline from Melbourne's esteemed CBD legal precinct lies this modern apartment in the 'La Banque' building, located in the heart of the cosmopolitan action.

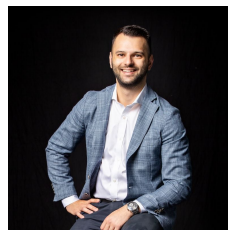
This 2-bedroom domain is positioned and presented to appeal to investors and owner-occupiers seeking sanctuary, accessibility, sophistication and health + fitness amenities.

It includes a secure car park and access to a heated onsite pool and a fully-equipped gymnasium.

This is an ideal base for busy professionals, students, city visitors and more, within easy reach of law courts and professional suites, universities, Marvel Stadium and transport including Flagstaff Station and tram stops.

Savour the green expanse of Flagstaff Gardens and the gourmet delights of Queen Victoria Market nearby, along with restaurants, Melbourne Central Shopping Centre, Emporium Melbourne and foodies' favourite Hardware

Price : \$ 532,000
Building Size : 63 sqm
View : <https://www.innerrealestate.com.au/sale/vic/inner-city/melbourne/residential/apartment/6139088>



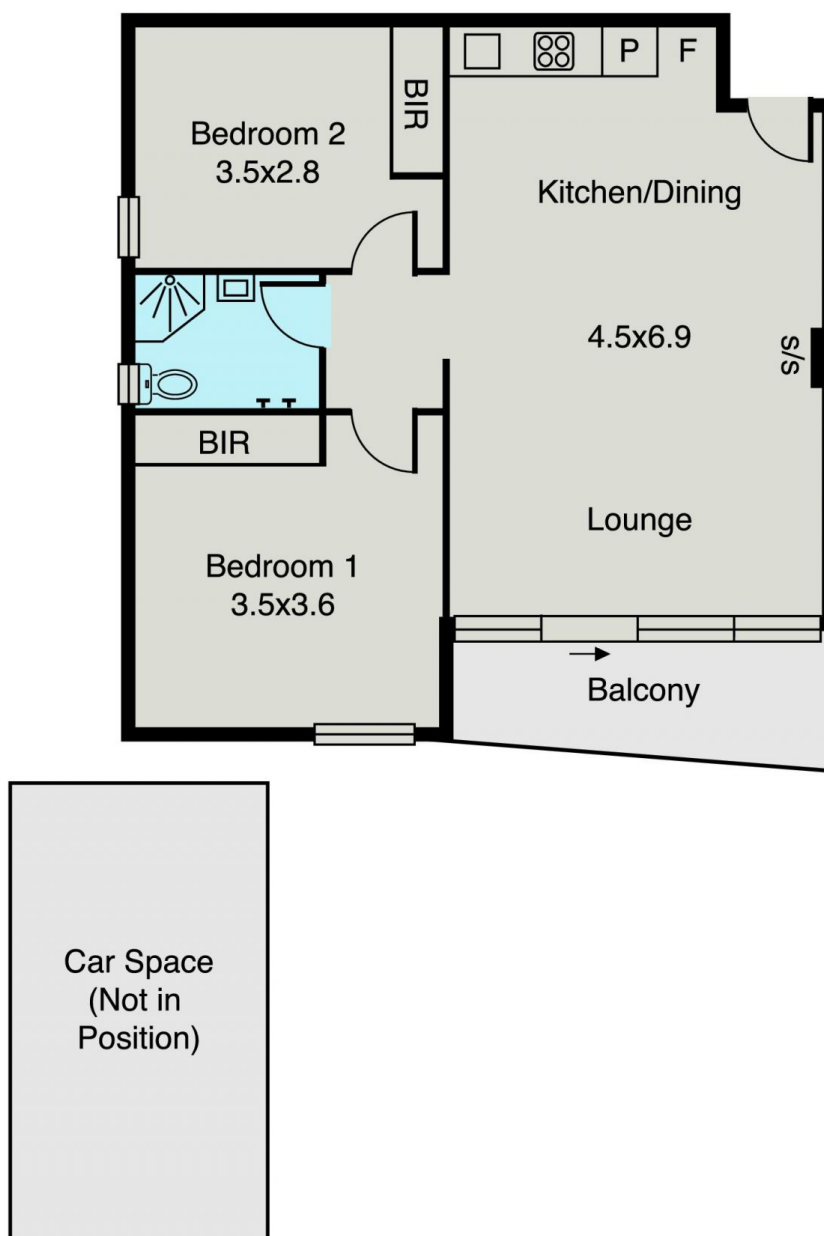
Anthony Cimino
+61 3 9804 5551



Jonathan Mallas
+61 3 9804 5551

Melbourne

1606/380 Little Lonsdale Street



ALL INFORMATION CONTAINED HERE IN IS GATHERED FROM SOURCES WE BELIEVE TO BE RELIABLE. HOWEVER WE CANNOT GUARANTEE ITS ACCURACY AND INTERESTED PERSONS SHOULD RELY ON THEIR OWN ENQUIRIES. DIMENSIONS ARE APPROXIMATE.