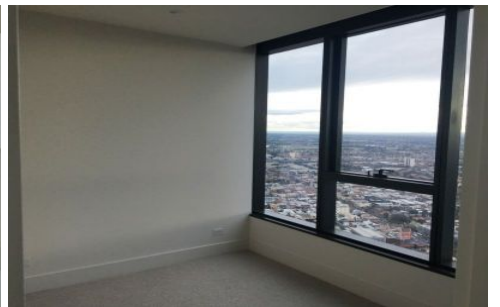




# INNER REAL ESTATE

## NEXTRE



**5901/500 Elizabeth Street Melbourne VIC**

**2  1 **

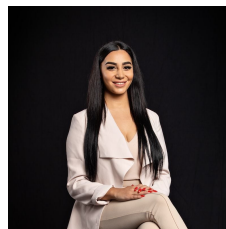
Light filled 2 bedrooms apartment, located at the heart of Melbourne CBD with great views! Fantastic location only a few minutes' walk to Melbourne Central, RMIT, Queen Victoria Market, shops, restaurants and public transports.

The apartment features two bedrooms both with built in robes, sleek kitchen with stainless steel appliances and Euro style laundry, open living with natural light flooding in from the private balcony.

Extra features include; split system heating/cooling, Double glazed windows, High speed internet (NBN).

Building features; Secure entry, indoor pool, sauna, steam room & spa facilities, In-house cinema, gym, Common lounge areas, Conference/Entertaining Rooms and Bicycle storage.

**View :** <https://www.innerrealestate.com.au/lease/vic/inner-city/melbourne/residential/apartment/6139092>



**Maha Yehia**  
**0448 019 444**



**Kayani Shahzeb**  
**+61 3 9804 5551**

<https://www.innerrealestate.com.au>