



84/632 St Kilda Road Melbourne VIC

2 1 1

Featuring stunning views and substantial dimensions, this 8th-floor apartment in THE BOULEVARDE is a sight to behold above one of Melbourne's most iconic boulevards.

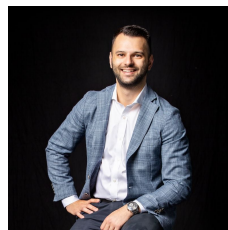
This spacious domain with a secure car park captures a sparkling vista extending over the green of Junction Oval to the blue of Port Phillip Bay.

Admire this spectacle from the window-walled living and dining room, and from both bedrooms. Soak up sea breezes and sunsets from the full-width covered balcony on a warm summer's evening.

The fresh interior features a stone-topped kitchen and a marble-topped bathroom, while this privileged position presents a first-class cosmopolitan lifestyle minutes to the CBD.

Walk to Albert Park Lake, cafes, tram stops, parkland and Fitzroy Street's restaurant and bar scene. Cruise to the beach in minutes and to Acland Street, Chapel Street and

Price : \$ 687,000
Building Size : 100 sqm
View : <https://www.innerrealestate.com.au/sale/vic/inner-city/melbourne/residential/apartment/6139093>



Anthony Cimino
+61 3 9804 5551



Jonathan Mallas
+61 3 9804 5551

Melbourne

84/632 St Kilda Road,



ALL INFORMATION CONTAINED HERE IN IS GATHERED FROM SOURCES WE BELIEVE TO BE RELIABLE. HOWEVER WE CANNOT GUARANTEE ITS ACCURACY AND INTERESTED PERSONS SHOULD RELY ON THEIR OWN ENQUIRIES. DIMENSIONS ARE APPROXIMATE.