



8503/228 La Trobe Street Melbourne VIC

2 2 1

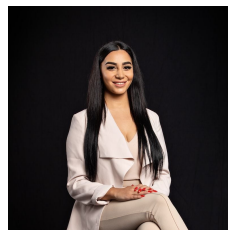
Secure this newest landmark in the Melbourne CBD. Aurora is the only residential development in Melbourne with direct access to the underground Melbourne Central Train Station and the best shopping precincts in Melbourne.

Aurora Melbourne Central offers:

- 2 Generously sized bedrooms
- Elegant and luxurious finishes
- Superb quality Miele kitchen appliances, Microwave, integrated fridge, washing machine and dryer and secured underground car park
- Floor to ceiling glass with stunning views across the city to the bay, parklands, Dandenong Ranges and beyond

Don't miss the rare opportunity to live amongst the clouds and experience a new urban lifestyle

View : <https://www.innerrealestate.com.au/lease/vic/inner-city/melbourne/residential/apartment/6139095>



Maha Yehia
0448 019 444



Kayani Shahzeb
+61 3 9804 5551