



1/21 Bowman Street Noble Park VIC

3 1 2

****ARRANGE AN INSPECTION TIME ONLINE - DETAILS BELOW****

You will be absolutely impressed by this stunning 3 bedroom unit.

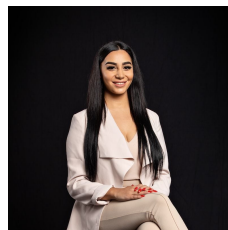
Upon entry you will be greeted by a large lounge area leading to a well appointed timber kitchen with gas cook top and dining area.

All 3 bedrooms are a good size and there is also a well appointed central bathroom and a separate laundry.

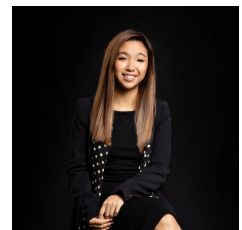
The property features a lock up garage, ducted heating and a split system air-conditioner. Set in a quiet location in a popular spot close to all amenities including local shops, schools and major freeways.

Garden Maintenance will be included as well.

View : <https://www.innerrealestate.com.au/lease/vic/south-east/noble-park/residential/unit/6139104>



Maha Yehia
0448 019 444



Hayley Tran
+61 3 9804 5551