



INNER REAL ESTATE NEXTRE



20/37-39 Albert Road Melbourne VIC

This two level office is located at the front of the enviable Albert Square with direct exposure to Kings Way traffic.

The ground floor contains a generous reception area with inbuilt kitchenette. Behind a professional glass partition are three workstations and an enclosed office.

Upstairs is an enormous boardroom, open plan work space and mezzanine level storage.

Three secure car parks are included in the rental. Available furnished or unfurnished.

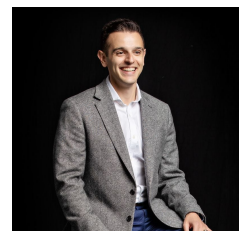
Building Size : 102 sqm

View

: <https://www.innerrealestate.com.au/lease/vic/inner-city/melbourne/commercial/offices/6139105>



Sandra Cimino
0398045551



Michael Cimino
+61 3 9804 5551