



2/3 Claudia Street Noble Park VIC

2 1 1

This well positioned 2 bedroom unit could be a great start for you and your family! The list of features includes 2 good sized bedrooms with BIR's, kitchen leading into living area with all electric appliances, gas ducted heating, carport area and is withing walking distance of local schools, shops and public transport!

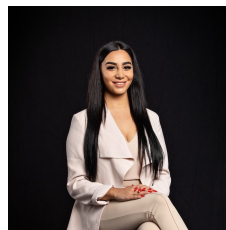
An inspection will impress so make your appointment today!

Arranging an inspection is easy.

To book a time to inspect, simply click on 'Email Agent' to arrange.

By registering, you will be instantly informed of any updates, changes or cancellations for your appointment.

View : <https://www.innerrealestate.com.au/lease/vic/south-east/noble-park/residential/unit/6139117>



Maha Yehia
0448 019 444



Michael Cimino
0400 260 133