

4008/80 A'beckett Street Melbourne VIC

2 1

This corner 2-bedroom sanctuary is ideal for the busy professional, investor or first home buyer seeking a fusion of accessibility, style and premium amenities in the core of the CBD.

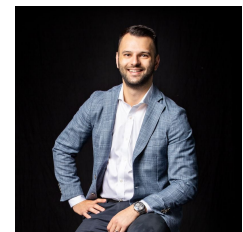
At a glance:

- ? Accessible inner-city living
- ? Modern corner apartment
- ? Views over Flagstaff Gardens to the Yarra River and the Bolte Bridge
- ? Views over the Queen Victoria Market
- ? Walk to Flagstaff Gardens and the Queen Victoria Market
- ? Near RMIT, Emporium Melbourne and Melbourne Central
- ? Walk to free trams and a multitude of cafes and restaurants
- ? Bedrooms with windows and built-in robes
- ? Light-filled living with a broad view

View : <https://www.innerrealestate.com.au/sale/vic/inner-city/melbourne/residential/apartment/6139119>



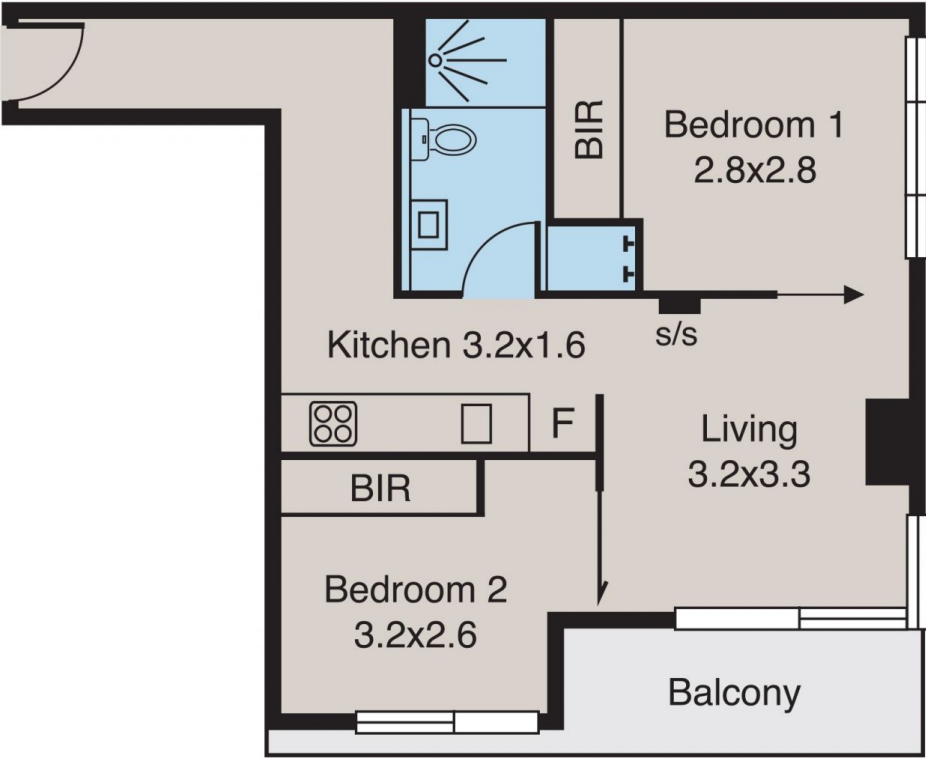
Jonathan Mallas
+61 3 9804 5551



Anthony Cimino
+61 3 9804 5551

Melbourne

4008/80 A'Beckett Street



ALL INFORMATION CONTAINED HERE IN IS GATHERED FROM SOURCES WE BELIEVE TO BE RELIABLE. HOWEVER WE CANNOT GUARANTEE ITS ACCURACY AND INTERESTED PERSONS SHOULD RELY ON THEIR OWN ENQUIRIES. DIMENSIONS ARE APPROXIMATE.