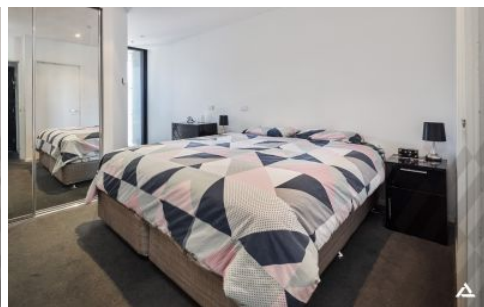
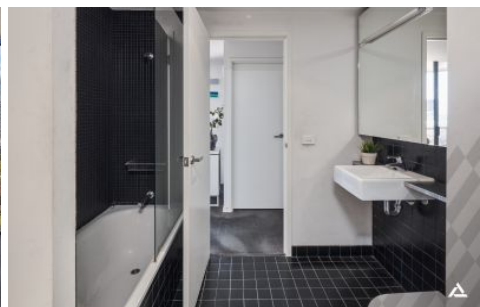




# INNER REAL ESTATE

## NEXTRE



### 1607/8 Waterview Walk Docklands VIC

2 2 1

Dazzling corner views and a commanding location in the heart of the Docklands unite with this luxury apartment in the South Tower of the prestigious Watergate development.

This spacious, modern domain features a secure car park and a broad vista stretching over Docklands Park towards the harbour, and to Marvel Stadium steps away.

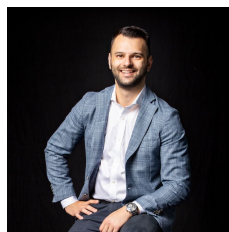
From premium facilities to impressive dimensions, this is the perfect base from which to enjoy major sporting events and entertainment, harbourfront dining and the spoils of Crown Melbourne and DFO South Wharf nearby.

It's a short walk to Southern Cross Station, a short tram ride to the CBD and encased in a spectacle of lights at night courtesy of its corner position.

The floorplan features a large balcony and stunning open-plan living backdropped by floor-to-ceiling windows that maximise the Level 16 aspect.

**Building Size** : 97.7 sqm

**View** : <https://www.innerrealestate.com.au/sale/vic/inner-city/docklands/residential/apartment/6139130>



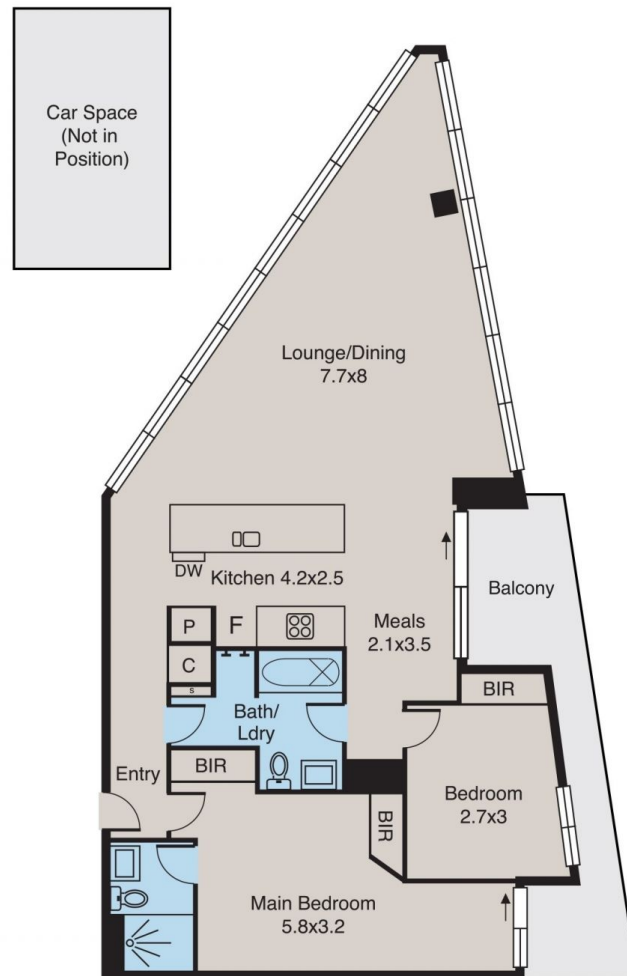
**Anthony Cimino**  
+61 3 9804 5551



**Jonathan Mallas**  
+61 3 9804 5551

# Docklands

1607/8 Waterview Walk



ALL INFORMATION CONTAINED HERE IN IS GATHERED FROM SOURCES WE BELIEVE TO BE RELIABLE. HOWEVER WE CANNOT GUARANTEE ITS ACCURACY AND INTERESTED PERSONS SHOULD RELY ON THEIR OWN ENQUIRIES. DIMENSIONS ARE APPROXIMATE.