



INNER REAL ESTATE NEXTRE



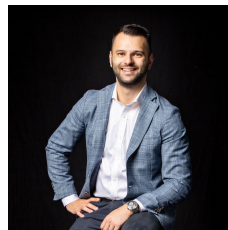
903/31 A'beckett Street Melbourne VIC

1 1

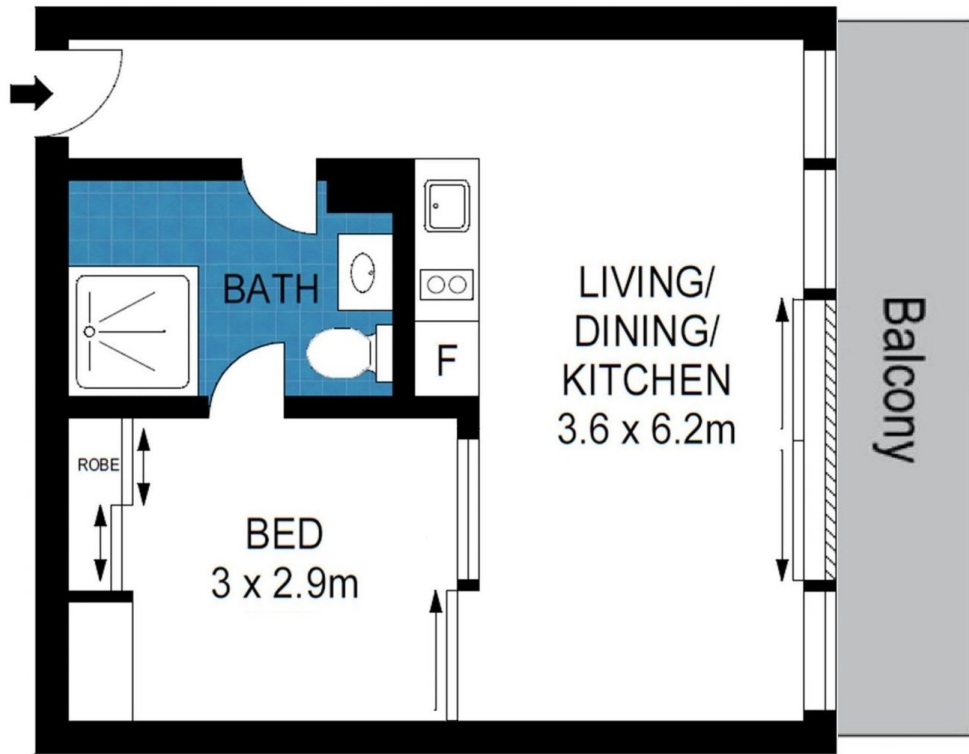
Boasting a premier position in Melbourne's sought-after university hub, this modern one-bedroom apartment has been tailored for low maintenance city living. Set upon Level 9 of A'Beckett Tower, a popular secure complex, the open plan layout is complemented by a large balcony. An outstanding opportunity for the astute investor or owner-occupier, this well presented property is located steps from RMIT University, trains and trams, a host of cafes, Melbourne Central shops and the State Library. It is also placed within easy walking distance of Melbourne University, Lygon Street restaurants, Chinatown and Queen Victoria Market.

Generic photos used

Price : \$ 330,000
Building Size : 45 sqm
View : <https://www.innerrealestate.com.au/sale/vic/inner-city/melbourne/residential/apartment/6139164>



Anthony Cimino
+61 3 9804 5551



ALL INFORMATION CONTAINED HERE IN IS GATHERED FROM SOURCES WE BELIEVE TO BE RELIABLE. HOWEVER WE CANNOT GUARANTEE ITS ACCURACY AND INTERESTED PERSONS SHOULD RELY ON THEIR OWN ENQUIRIES. DIMENSIONS ARE APPROXIMATE.