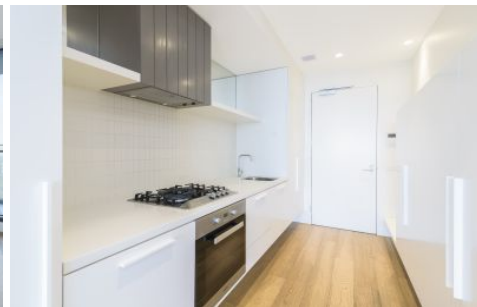




# INNER REAL ESTATE NEXTRE



**1113/35 Albert Road Melbourne VIC**

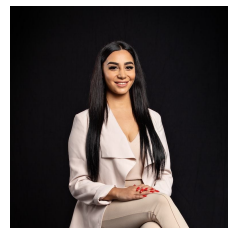
2 2 1

Located in the Emerald building at an ideal location close to trams, Albert Park Lake and the CBD, this two bedroom apartment is sure to impress.

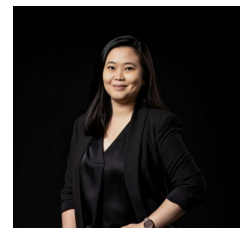
**View :** <https://www.innerrealestate.com.au/lease/vic/inner-city/melbourne/residential/apartment/6139177>

This apartment offers open plan living/dining and quality kitchen with Miele appliances and colour matched dishwasher. The light filled lounge offers floor to ceiling double-glazed windows leading to a large balcony that offers fantastic views.

Built in wardrobes in both bedrooms and ensuite to master bedroom. Additional features include split system heating and cooling in living & both bedrooms, European laundry, video intercom, a secure car space and a storage cage.



**Maha Yehia**  
**0448 019 444**



**Maya Angela**  
**+61 3 9804 5551**

Arranging an inspection is easy.

<https://www.innerrealestate.com.au>