

302/36 Lynch Street Hawthorn VIC

2 1 1

High on style, low on maintenance and located in the heart of the action, this sleek 2-bedroom apartment in Hawthorn's Riva complex presents premium city-edge living.

This modern domain features treetop views over Grace Park, quality finishes throughout and a secure basement car space plus a storage cage.

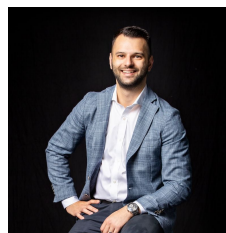
Walk to city trams, Glenferrie and Hawthorn Train Stations, Swinburne University, the Hawthorn Aquatic & Leisure Centre and the restaurants and cafes that line nearby Glenferrie Road.

One for the discerning downsizer, the savvy investor, the first home dreamer and more, it places you within effortless reach of recreation, education, transport, shopping and the CBD.

The sparkling interior features a stone-topped Bosch kitchen with an integrated fridge freezer, a dishwasher, a

Price : \$ 560,000

View : <https://www.innerrealestate.com.au/sale/vic/east/hawthorn/residential/apartment/6139178>



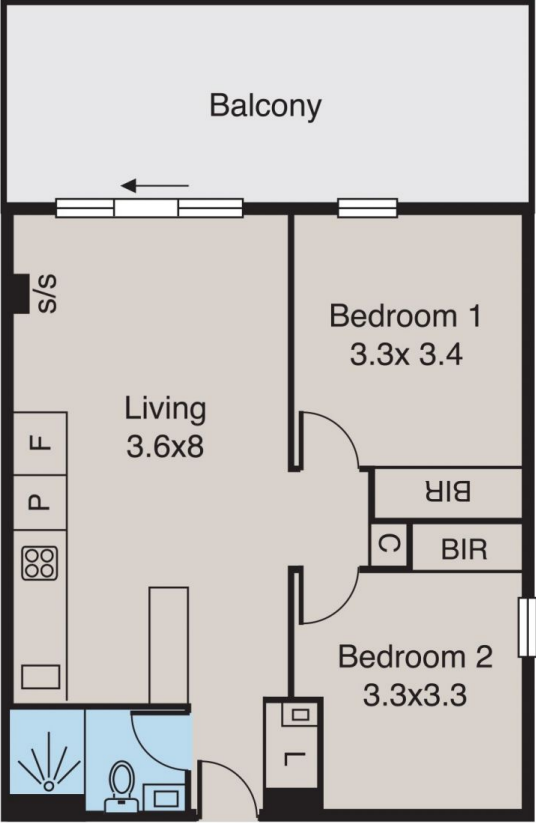
Anthony Cimino
+61 3 9804 5551



Jonathan Mallas
+61 3 9804 5551

Hawthorn

302/36 Lynch Street



ALL INFORMATION CONTAINED HERE IN IS GATHERED FROM SOURCES WE BELIEVE TO BE RELIABLE. HOWEVER WE CANNOT GUARANTEE ITS ACCURACY AND INTERESTED PERSONS SHOULD RELY ON THEIR OWN ENQUIRIES. DIMENSIONS ARE APPROXIMATE.