



INNER REAL ESTATE NEXTRE

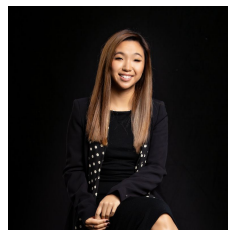


3908/135 City Road Southbank VIC

2 1 1

With its generous dash of designer flair and lofty location on the 39th floor of Southbank's New York-inspired 'WRAP' building, this stylish 2BR apartment represents an enviable brand of sophisticated inner city living! Immerse yourself in the life of the city with Crown Casino just a stroll, trams and Southgate's retail and restaurant hub on your doorstep and the CBD in easy reach. With a modern neutral interior providing the perfect backdrop for contemporary tastes, open-plan living and dining extending through double-glazing sliding doors to the covered balcony, while extras include the superb stone-topped kitchen, sleek bathroom with shower over bathtub, reverse-cycle air-conditioning and a car space. Complete with exceptional access to residents' gym, pool and sauna plus 24-hour security and concierge, it presents an excellent opportunity for first home buyers or savvy investors.

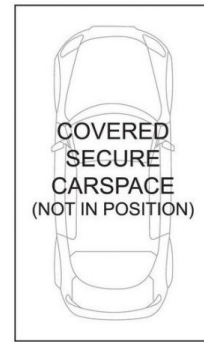
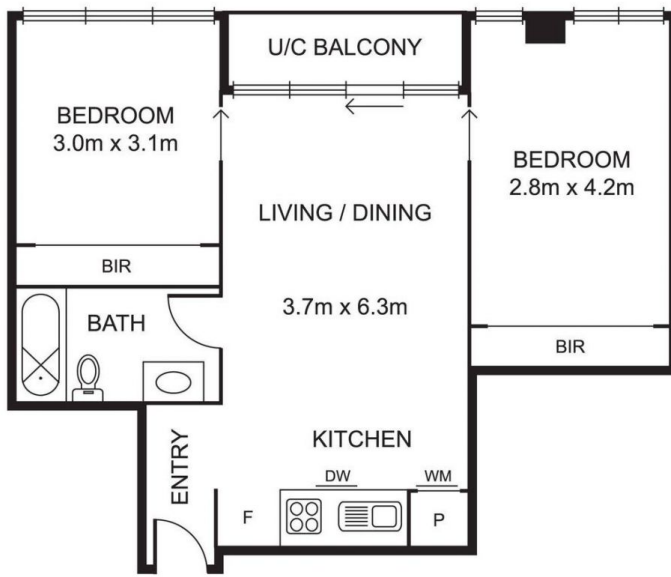
View : <https://www.innerrealestate.com.au/lease/vic/inner-city/southbank/residential/apartment/6139217>



Hayley Tran
+61 3 9804 5551



Jonathan Mallas
+61 3 9804 5551



Disclaimer: Please note plans are indicative only and not drawn to exact scale. All dimensions are approximate. Potential buyers should satisfy themselves of any pertinent matters.