



3/6-8 Cyril Street Elwood VIC

2 1 1

Steps to trams and a short walk to Ripponlea Station, this 2-bedroom apartment with a car space embodies effortless Elwood living.

Make your entrance into a lovely tree-lined precinct prized for its serenity and its accessibility to transport and great local shops with vibrant cafes and restaurants.

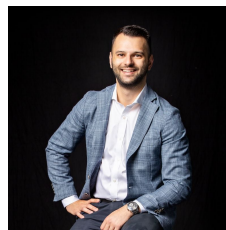
This light, bright domain rests in a gated apartment building 5 minutes' drive to the beach, within easy reach of St Kilda, and a short tram ride to the CBD.

It comprises a private balcony, open-plan central living, and bedrooms with built-in robes located at opposite ends of the floorplan.

There's scope to modernise and exceptional security in a quiet court with minimal traffic, 200m to Brighton Road tram stops.

Other features include floorboards, a single-drawer DishDrawer Dishwasher, a neat bathroom and laundry,

View : <https://www.innerrealestate.com.au/sale/vic/bayside/elwood/residential/apartment/6139224>



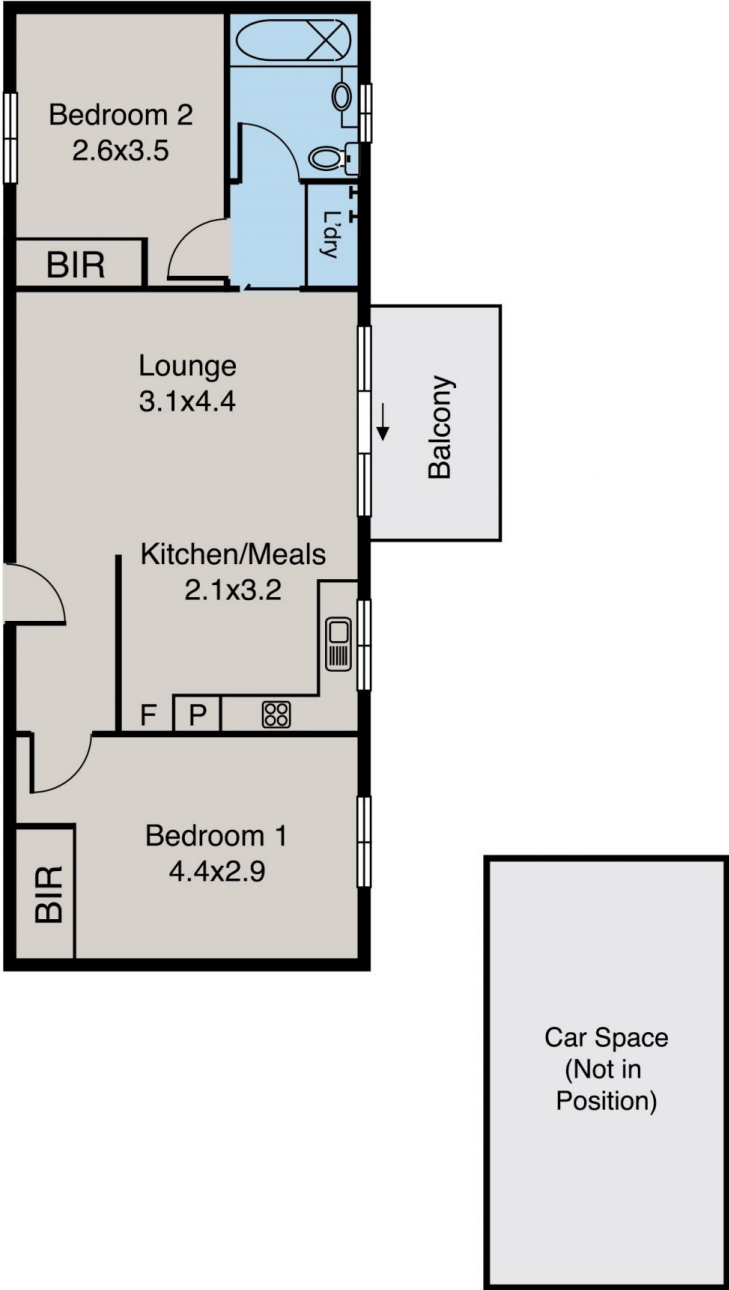
Anthony Cimino
+61 3 9804 5551



Jonathan Mallas
+61 3 9804 5551

Elwood

3/6-8 Cyril Street



ALL INFORMATION CONTAINED HERE IN IS GATHERED FROM SOURCES WE BELIEVE TO BE RELIABLE. HOWEVER WE CANNOT GUARANTEE ITS ACCURACY AND INTERESTED PERSONS SHOULD RELY ON THEIR OWN ENQUIRIES. DIMENSIONS ARE APPROXIMATE.