



**INNER REAL ESTATE  
NEXTRE**

### Private Inspections Made Easy

- Book**  
Click "Book an Inspection Time" to select a time. Alternatively click "Contact Agent" and you will be sent a link to the online booking system.
- Inspect**  
Our friendly team of Sales and Leasing agents will take you on a private inspection of the property at a time that suits your schedule.
- Update**  
By registering you confirm your place at the inspection. You will immediately be informed of any changes and updates to the property including price.



**1705/315 La Trobe Street Melbourne VIC**

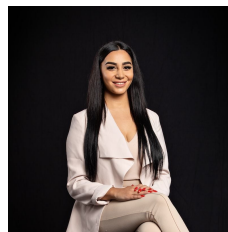
2 1

This two bedroom apartment features floor to ceiling windows allowing for maximum natural light and ventilation, creating a vibrant and exciting living space. Property features 2 good size bedroom both with built in robes, quality appliances, stone bench tops to kitchen and beautifully appointed bathroom with laundry.

Residents lounge flowing onto landscaped terraces with city views.

Close to the University of Melbourne, RMIT, QV Shopping Center, Queen Victoria Market, Crown, Chinatown, Melbourne Central, Flagstaff Gardens, Legal precinct, Underground rail loop and trams, Entertainment and theaters, Sporting Arenas, Premium Apartment Stores and Boutiques.

**View :** <https://www.innerrealestate.com.au/lease/vic/inner-city/melbourne/residential/apartment/6139231>



**Maha Yehia**  
**0448 019 444**