



1506/568 St Kilda Road Melbourne VIC

1 1 1

Rising high above St Kilda Road to capture views of Albert Park Lake and Port Philip Bay, this one-bedroom apartment creates a striking city presence.

Step into the property market or add to your portfolio with this spacious domain in the 'Rhapsody' building.

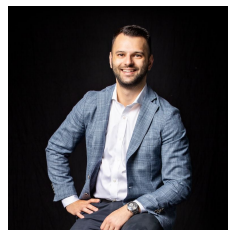
It features a secure car space, 2 bedroom windows, an enclosed balcony with louvre windows and a stone kitchen with quality stainless steel appliances, including a gas cooktop.

Exposed concrete ceilings evoke a warehouse vibe within a building by renowned international design firm Fender Katsalidis.

The view also extends over St Kilda Road to the green of Wesley College and beyond.

Window-walled living flows onto the balcony, while a gymnasium, a meeting room and an expansive lobby round out the onsite amenities.

View : <https://www.innerrealestate.com.au/sale/vic/inner-city/melbourne/residential/apartment/6139249>



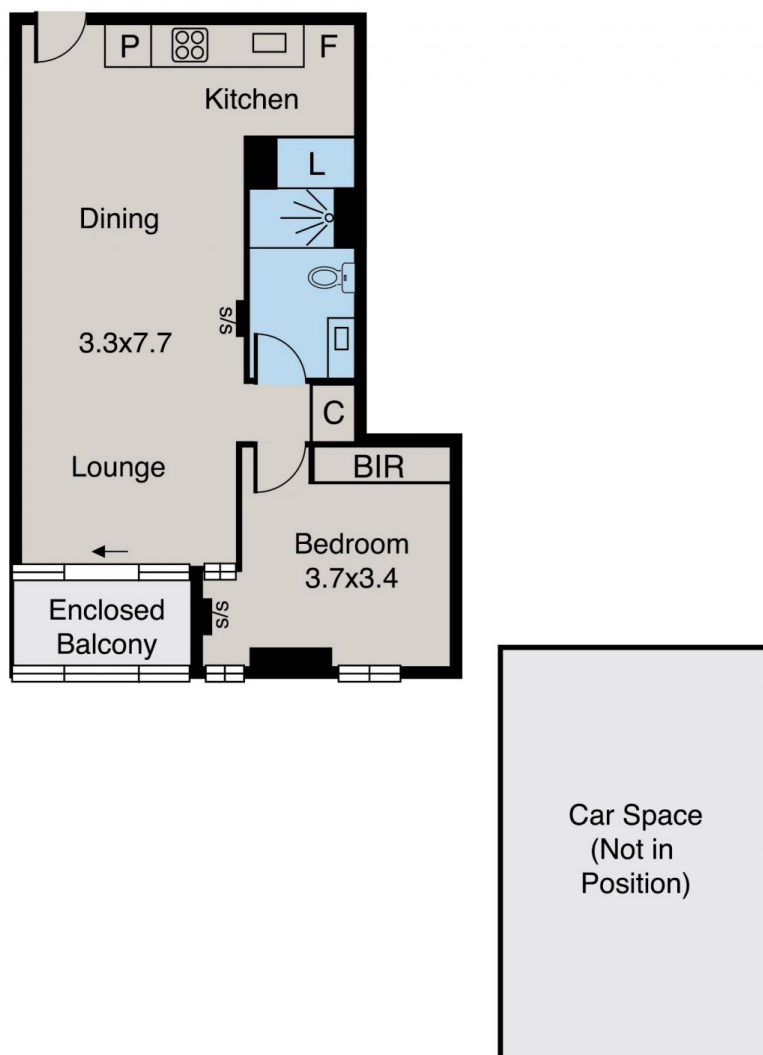
Anthony Cimino
+61 3 9804 5551



Jonathan Mallas
+61 3 9804 5551

Melbourne

1506/568 St Kilda Road



ALL INFORMATION CONTAINED HERE IN IS GATHERED FROM SOURCES WE BELIEVE TO BE RELIABLE. HOWEVER WE CANNOT GUARANTEE ITS ACCURACY AND INTERESTED PERSONS SHOULD RELY ON THEIR OWN ENQUIRIES. DIMENSIONS ARE APPROXIMATE.