

B1/57 Flinders Lane Melbourne VIC

2 1

Warehouse-style accommodation is on full display with this 2-bedroom apartment in the boutique Manhattan building in Melbourne's iconic Flinders Lane.

Positioned in the 'Paris end' of the CBD, this urban offering is within easy reach of everything there is to love about Melbourne.

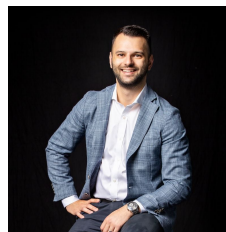
This is your opportunity to secure a city base strolling distance to world-famous restaurants and theatres and within easy reach of major sporting venues including the MCG and the Melbourne Tennis Centre.

It's walking distance to Flinders Street Station, high-end retail shopping, tram stops, Treasury Gardens, Southbank, the Yarra's edge and much more.

The eye-catching interior exudes a New York vibe, complete with soaring exposed concrete ceilings and pillars.

A sleek kitchen with a breakfast bar shares space with

View : <https://www.innerrealestate.com.au/sale/vic/inner-city/melbourne/residential/apartment/6139264>



Anthony Cimino
+61 3 9804 5551



Jonathan Mallas
+61 3 9804 5551



THIS FLOOR PLAN IS NOT TO SCALE. MEASUREMENTS ARE INDICATIVE AND IN METRES. VEGETATION IS PLACED FOR ILLUSTRATIVE PURPOSES ONLY.
THIS PLAN SHOULD NOT BE RELIED UPON. INTERESTED PARTIES SHOULD MAKE THEIR OWN ENQUIRIES.