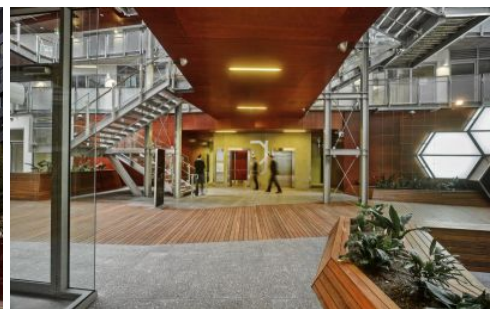




INNER REAL ESTATE NEXTRE



208/838 Collins Street Docklands VIC

Situated in the heart of Docklands offering a balance between lifestyle and work life.

This lifestyle working development is located in the rapidly evolving Docklands precinct with easy access via the City Link and Melbourne's extensive tram network and surrounded by some of Australia's top tier corporations including NAB, ANZ and the Myer head office.

Approximately 50sqm with features such as, natural ventilation, air conditioning, new floor coverings and great natural light.

Building Size : 50 sqm
View : <https://www.innerrealestate.com.au/lease/vic/inner-city/docklands/commercial/offices/6139270>



Sandra Cimino
0398045551



Michael Cimino
0400 260 133