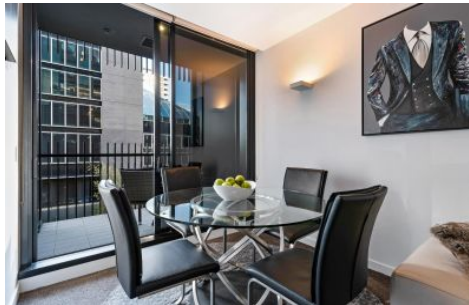




INNER REAL ESTATE NEXTRE



303/470 St Kilda Road Melbourne VIC

2 **1** **1**

Effortless urban living and premium parkland access share centre stage with this modern apartment on iconic St Kilda Road.

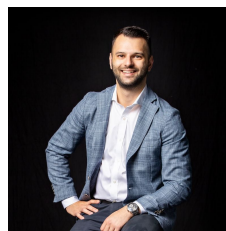
This blue-chip location in the striking Leopold building delivers an exceptional lifestyle close to many of Melbourne's premier amenities, including Albert Park Lake.

Beautifully appointed and presented, this 2-bedroom domain includes a secure basement car park, a window-walled master bedroom and a covered balcony, perfect for watching the world go by.

- ? Modern apartment on iconic St Kilda Road
- ? Includes a secure basement car space
- ? Premium parkland access near both Albert Park Lake and Fawkner Park

Price : \$ 448,000

View : <https://www.innerrealestate.com.au/sale/vic/inner-city/melbourne/residential/apartment/6139273>



Anthony Cimino
+61 3 9804 5551



INNER REAL ESTATE
NEXTRE



THIS FLOOR PLAN IS NOT TO SCALE. MEASUREMENTS ARE INDICATIVE AND IN METRES. VEGETATION IS PLACED FOR ILLUSTRATIVE PURPOSES ONLY.
THIS PLAN SHOULD NOT BE RELIED UPON. INTERESTED PARTIES SHOULD MAKE THEIR OWN ENQUIRIES.



INNER REAL ESTATE
NEXTRE

CAR SPACE
UNDER GROUND SECURE



THIS FLOOR PLAN IS NOT TO SCALE. MEASUREMENTS ARE INDICATIVE AND IN METRES. VEGETATION IS PLACED FOR ILLUSTRATIVE PURPOSES ONLY.
THIS PLAN SHOULD NOT BE RELIED UPON. INTERESTED PARTIES SHOULD MAKE THEIR OWN ENQUIRIES.