



202/8 Sutherland Street Melbourne VIC

2 2 1

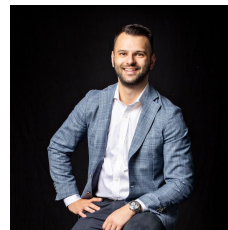
Showcasing a position of distinction in the heart of the CBD, this 2-bedroom, 2-bathroom, 1 car space apartment in the 'Melbourne Star' building captures the essence of city living.

Walk to Melbourne Central metres away, to Flagstaff Gardens, Queen Victoria Market, bars, cafes, world-class restaurants, tram stops, RMIT, Hardware Lane, Emporium Melbourne, tram stops and more.

At a glance

- ? Central position in the heart of the CBD
- ? Modern 2-bedroom, 2-bathroom apartment
- ? Steps to Melbourne Central
- ? Walk to Flagstaff Gardens and Queen Victoria Market
- ? Surrounded by bars, cafes, restaurants, tram stops and more

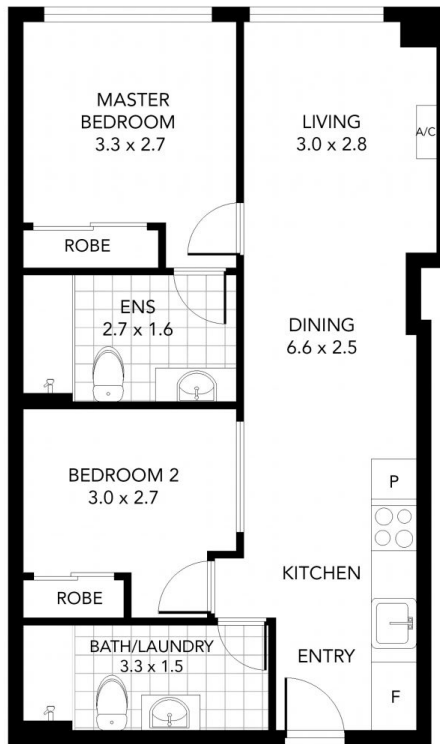
Building Size : 63 sqm
View : <https://www.innerrealestate.com.au/sale/vic/inner-city/melbourne/residential/apartment/6139277>



Anthony Cimino
+61 3 9804 5551



Jonathan Mallas
+61 3 9804 5551



THIS FLOOR PLAN IS NOT TO SCALE. MEASUREMENTS ARE INDICATIVE AND IN METRES. VEGETATION IS PLACED FOR ILLUSTRATIVE PURPOSES ONLY.
THIS PLAN SHOULD NOT BE RELIED UPON. INTERESTED PARTIES SHOULD MAKE THEIR OWN ENQUIRIES.



THIS FLOOR PLAN IS NOT TO SCALE. MEASUREMENTS ARE INDICATIVE AND IN METRES. VEGETATION IS PLACED FOR ILLUSTRATIVE PURPOSES ONLY.
THIS PLAN SHOULD NOT BE RELIED UPON. INTERESTED PARTIES SHOULD MAKE THEIR OWN ENQUIRIES.