



INNER REAL ESTATE NEXTRE



3606/81 A'beckett Street Melbourne VIC

2 1 1

CONTACT AGENT FOR A PRIVATE INSPECTION

This spectacular brand new two bedroom apartment located on the 36th floor is situated in the heart of Melbourne CBD. Empire provides residents with exceptional amenity, location and lifestyle options in the ever expanding and cosmopolitan CBD.

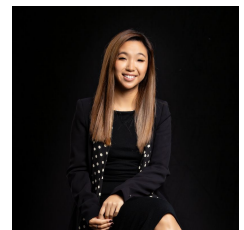
The apartment offers a spacious floor plan with light filled living room leading to your own private balcony. A contemporary, crafted kitchen with sleek appliances and fittings, both well sized bedrooms with built in robes and city views, a modern bathroom and a European Laundry. It also includes all white goods.

Empire also offers; a swimming pool, dining room, gym and a well being centre for residents to enjoy, along with a full

View : <https://www.innerrealestate.com.au/lease/vic/inner-city/melbourne/residential/apartment/6139279>



Maha Yehia
0448 019 444



Hayley Tran
+61 3 9804 5551

<https://www.innerrealestate.com.au>