



INNER REAL ESTATE

NEXTRE



Simple Steps to stay COVIDSafe at Open Homes
We are excited to be holding Open Homes again and ask that you follow these simple steps to keep our team, attendees and yourself safe when inspecting.

Register Before Inspection Book and confirm attendance so we can limit attendees	Hand Sanitiser Provided All attendees asked to use provided hand sanitiser prior to entering
Download the COVIDSafe App Launch App before entering the property	Keep your distance (1.5 meters) Please keep your distance from our team and other occupants at all times
Don't attend if unwell If you or a household member is sick contact us to arrange other time	10 person limit We will be enforcing the 10 person limit at all inspections

INNER REAL ESTATE
NEXTRE



205/39 Lonsdale Street Melbourne VIC

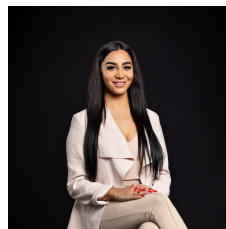
2 1

Located on Lonsdale St and surrounded by the business and retail precinct, this modern fully furnished two bedroom apartment has it all.

Featuring an open plan living and dining room with floor-to-ceiling windows, kitchen with ample storage space and stainless steel appliances, 2 bedrooms with built-in wardrobes and a central bathroom.

Amenities include secure intercom access, resident lounge, laundry facilities and building management. within moments to Carlton Gardens, QV, Melbourne Central, theatres, the CBD's famous cafes and restaurants along with easy access to public transport, retail shopping and Universities. This is a great opportunity so don't delay your inspection.

View : <https://www.innerrealestate.com.au/lease/vic/inner-city/melbourne/residential/apartment/6139281>



Maha Yehia
0448 019 444



Kayani Shahzeb
+61 3 9804 5551