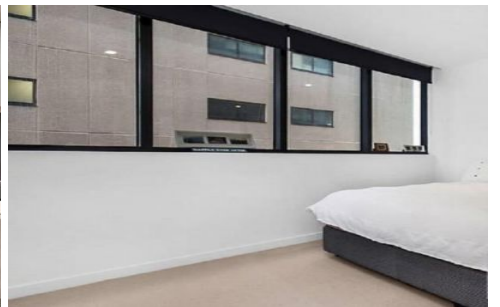




INNER REAL ESTATE NEXTRE



1214/50 Albert Road South Melbourne VIC

2 1 1

****CONTACT AGENT FOR A PRIVATE INSPECTION****

This absolutely stunning 2 bedroom apartment features open plan meals & living zone flowing onto good size balcony, 2 well-appointed bedrooms both with built in robes and Euro laundry/storage. Functional L-shape kitchen stone bench tops, stainless steel Miele appliances (gas cook top & wok burner) & integrated timber-grain style cabinetry.

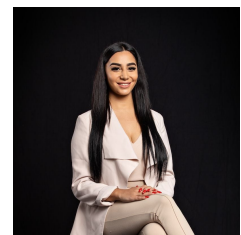
Full-height glazing invites natural light, R/C heating & cooling, security intercom entry, concierge and secure car park.

Relax in the lobby lounge alongside ambient fireplaces, workout in the 'Health Club's fully equipped gym & cardio space indulge in the hot tub, massage room, or indoor garden retreat. Entertain on the rooftop with BBQ, spa, sundeck & postcard views or host an exclusive function in

View : <https://www.innerrealestate.com.au/lease/vic/inner-city/south-melbourne/residential/apartment/6139285>



Izabella Frattezi Ramos
0418 511 885



Maha Yehia
0448 019 444



CARSPACE
(NOT IN POSITION)