



215/12 Queens Road Melbourne VIC

2 **1** **1**

Queens Domain is located within walking distance to some of Melbourne's beautiful outdoor spaces such as Fawcner Park, Junction Oval, Albert Park Golf Course and the Melbourne Sports and Aquatic Centre - all this just 3kms from Melbourne's CBD.

This two-bedroom apartment features:

****Contemporary kitchen with high-end ASKO appliances and integrated Fisher and Paykel Fridge****

****Larger floor plan than other 2 Bedroom apartments****

- Open plan dining/living area
- Larger floor plan than other 2 bedroom apartments
- European laundry built into custom cabinetry
- Master bedroom with built-in robes and 'Juliette' balcony
- Light-filled second bedroom with built-in robes
- Fully appointed central bathroom
- Private balcony capturing view of Albert Park Golf Club

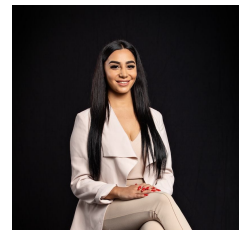
Building Size : 66.8 sqm

View

: <https://www.innerrealestate.com.au/lease/vic/inner-city/melbourne/residential/apartment/6139287>



Hayley Tran
+61 3 9804 5551



Maha Yehia
0448 019 444