



INNER REAL ESTATE

NEXTRE



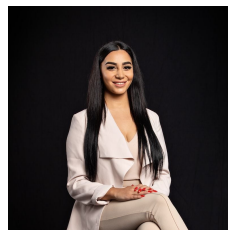
4508/80 A'beckett Street Melbourne VIC

2 2 1

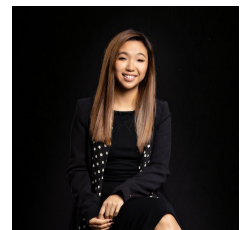
CONTACT AGENT FOR A PRIVATE INSPECTION

Located in the heart of the CBD, ideal location that brings the best of the city to you within walking distance of RMIT, Victoria and Melbourne Universities, Melbourne Central, Emporium, Myer and David Jones shopping complex and a stone's throw from the fabulous fresh produce of Queen Victoria Market with terrific nightlife and entertainment options on every corner, cafes and restaurants. This apartment offers 2 bedrooms, both with build in robes, master with en-suite, open plan living area leading on to a good size balcony overlooking the city and suburbs, modern kitchen with gas cooking and quality appliances, split-system heating and cooling. This apartment also provides a secure car space and storage. Building comes with a cinema room, pool and common area on level 53. Be the first to inspect.

View : <https://www.innerrealestate.com.au/lease/vic/inner-city/melbourne/residential/apartment/6139288>



Maha Yehia
0448 019 444



Hayley Tran
+61 3 9804 5551