



# INNER REAL ESTATE NEXTRE



## unit 03/213 Williams Road South Yarra VIC

1 1 1

This cozy one bedroom apartment is ideally located close to Hawksburn train station, trams, Chapel Street shopping precinct and Toorak Village, also a short stroll to local cafes and parkland.

Including cooling/heating system, a separate kitchen with meals area, bedroom with ensuite bathroom, bright living/dining room and a remote controlled lock up garage on ground floor.

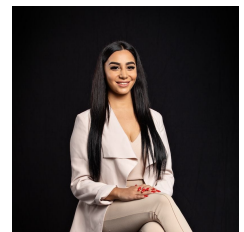
Other features include stone bench top, gas cooking, dishwasher and internal laundry plus abundant natural light. An inspection is sure to impress!

**\*\*CONTACT AGENT TO ARRANGE AN INSPECTION TIME OR BOOK ONLINE FOR AN OPEN\*\***

**View :** <https://www.innerrealestate.com.au/lease/vic/inner-city/south-yarra/residential/apartment/6139300>



**Izabella Frattezi Ramos**  
0418 511 885



**Maha Yehia**  
0448 019 444



