



G25/211 Bay Street Brighton VIC

2 2 1

You'll want to live in this two bedroom apartment in Melbourne's most prestigious Bayside Suburb - Brighton. Featuring floor to ceiling windows bringing in an abundance of natural light, timber oak floors, open plan living and dining area which opens out to the private courtyard, kitchen with stainless steel appliances, integrated fridge, gas cooking and dishwasher, feature mirrored cabinet above island bench to create the feeling of more space, two spacious bedrooms with mirrored built in robes and master with ensuite, central main bathroom and European laundry with washer & dryer already installed.

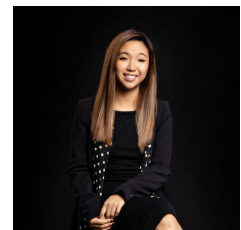
Designed by leading Architect Elenberg Fraser and developer BPM have created a project that showcases spaces and finishes a cut above the rest.

The building features a landscaped courtyard which provides a garden oasis for residents to use as they please. The apartment's location is nestled among Bay

View : <https://www.innerrealestate.com.au/lease/vic/bay-side/brighton/residential/apartment/6139304>



Jonathan Mallas
+61 3 9804 5551



Hayley Tran
+61 3 9804 5551