



**INNER REAL ESTATE
NEXTRE**

**Current COVID Policy
Private Inspections
Permitted**

With the latest update, allowing for private inspections of rental and sales properties to recommence, we ask that you follow these simple steps to keep everyone safe.

- Book an Inspection**
Bookings are essential as all inspections are private and contact details required.
- Limited to 1 on 1 Inspection**
Purchaser/tenant may be accompanied by 1 other person from an existing household.
- Hand Sanitiser/ Face Mask**
Face mask to be worn at all times and hand sanitiser will be provided upon entry.
- Outside 5km radius**
Attendees may travel beyond 5km radius for the purpose of attending a private inspection. Inter/Regional boundaries cannot be crossed.

Submit an enquiry and a member of our team will gladly guide you through the new process.



1505/31 A'beckett Street Melbourne VIC

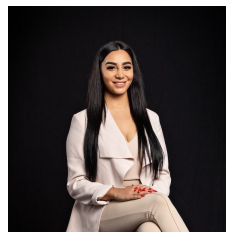
2 1

Located on the 15th floor of the A'Beckett Tower and offering 2 bedrooms with mirrored BIR, this ideal apartment is sure to impress.

View : <https://www.innerrealestate.com.au/lease/vic/inner-city/melbourne/residential/apartment/6139305>

Offering open plan living, with split system air conditioning to ensure your comfort no matter the season, well appointed central bathroom and kitchen. The apartment has plenty of natural light and you can enjoy the amazing views of the city skyline from the comfort of your own lounge. This apartment is close to anything and everything you could desire, with cafe's, restaurants, RMIT & Melbourne Universities, QV and Melbourne Central within easy access.

This apartment will not last long.

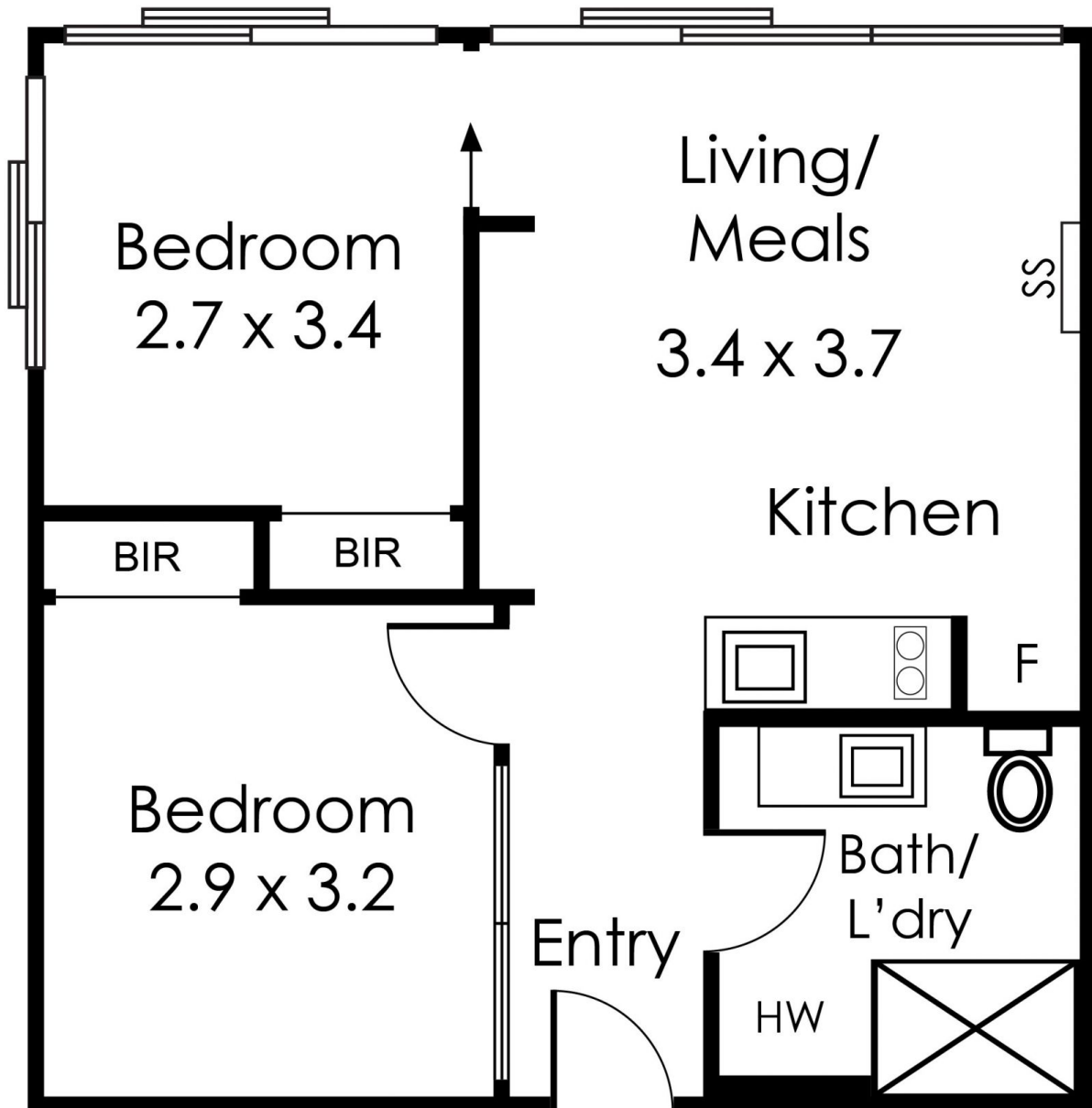
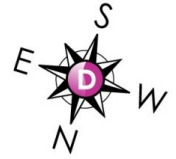


Maha Yehia
0448 019 444



Hayley Tran
+61 3 9804 5551

1505/31A Beckett Street, Melbourne



Not to Scale

Every care has been taken to verify the accuracy of details in this brochure. Prospective purchasers are requested to take such action as is necessary to satisfy themselves of any pertinent matters