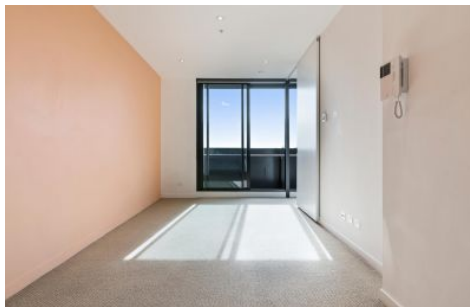




# INNER REAL ESTATE NEXTRE



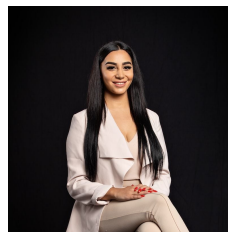
**1904/555 Swanston Street Carlton VIC**

**2  2 **

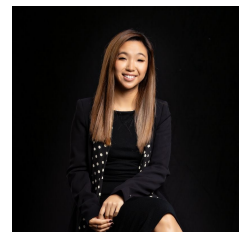
Located conveniently near RMIT, University of Melbourne, Queen Victoria Market and Carlton's picturesque parks and gardens and the CBD, this near new Swanston Square apartment is sure to impress.

**View :** <https://www.innerrealestate.com.au/lease/vic/inner-city/carlton/residential/apartment/6139307>

Offering 2 bedrooms with built in robes, well appointed modern kitchen and living area, Heating and cooling, glistening central bathroom and security entrance.



**Maha Yehia**  
**0448 019 444**



**Hayley Tran**  
**+61 3 9804 5551**

Other features include; The Sky Deck, a rooftop oasis with spas, cinema, BBQ facilities and lounge, your living extends beyond your apartment.  
Be quick as these apartments will not last.

<https://www.innerrealestate.com.au>