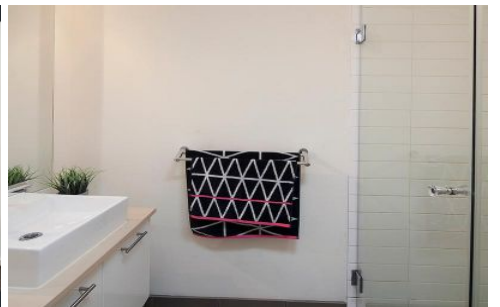
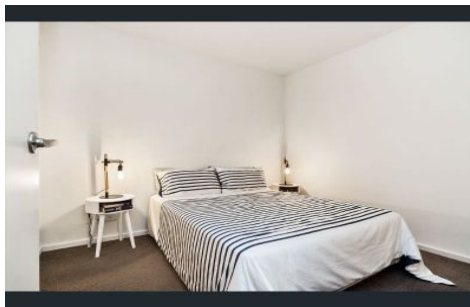
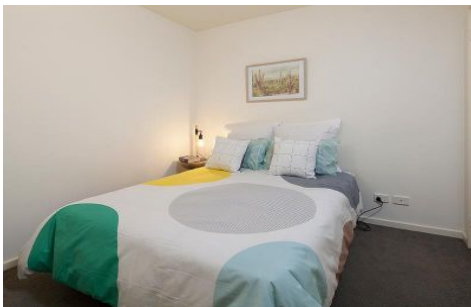




INNER REAL ESTATE NEXTRE



11/50 Rosslyn Street West Melbourne VIC

2 1 1

****Car space is negotiable****

****Furniture available upon request****

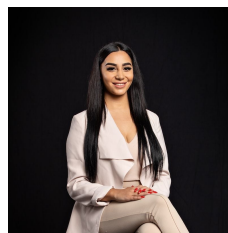
****\$350.00 p/week for the first month and \$400.00 p/week for the following lease period****

View : <https://www.innerrealestate.com.au/lease/vic/inner-city/west-melbourne/residential/apartment/6139308>

Perfectly located among everything the city has to offer: the charming laneways, heritage gardens, the sporting facilities & easy public transport, you will find this two bedrooms apartment.

Featuring two bedrooms both with BIR's, central bathroom, and open plan kitchen/living with stainless steel appliances including dishwasher. Separate European laundry. Other features include: heating/cooling & security entrance.

Situated in a premier location, a stones throw to Queen Victoria Market, Flagstaff underground station and walking



Maha Yehia
0448 019 444



Izabella Frattezi Ramos
0418 511 885