



INNER REAL ESTATE NEXTRE

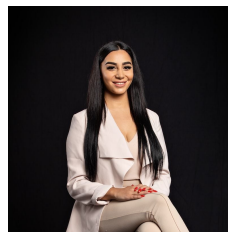


1512/639 Lonsdale Street Melbourne VIC

2  2 

Apartment offers 2 large bedrooms, 2 balcony's with amazing views, and 2 bathrooms in the prime location with full of Docklands and City views. It also includes: open plan living, electric cooking, dishwasher, split system air-conditioning, full screen intercom. Within a short walk distance to public transport Southern Cross station and tram stops, restaurants, cafes and an abundance of lifestyle opportunities, this lovingly maintained apartment showcases the benefits and advantages of living within the CBD. Residents of the building also have access to a gym complete with a 25-metre indoor lap pool and expansive deck overlooking historic Spencer Street.

View : <https://www.innerrealestate.com.au/lease/vic/inner-city/melbourne/residential/apartment/6139334>



Maha Yehia
0448 019 444



Kayani Shahzeb
+61 3 9804 5551