



**306/539 St Kilda Road Melbourne VIC**

2 2 1

Positioned on the 3rd floor of the iconic Chevron complex, overlooking Melbourne's premier boulevard, this 2-bedroom 2-bathroom apartment with a secure parking space is lifestyle plus.

Trams to the city, the MCG, the beach, Chapel Street shopping, and the restaurants, pubs, bars and nightlife of St Kilda, Prahran and Windsor are at your front door.

And, for those quieter days, just across the road to the north is the beautiful Fawkner Park and to the west the iconic Albert Park and MSAC.

The accommodation features an ensuited master bedroom that gazes out over St Kilda Road below.

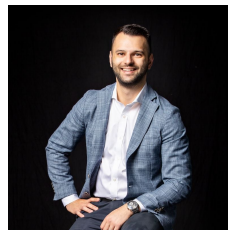
The second bedroom comprises a built-in robe and retractable wall panels that offer flexibility to create an extension of the living area, if desired.

The generous kitchen comprises quality stainless steel appliances including a gas cooktop and a dishwasher.

**Building Size** : 67 sqm

**View**

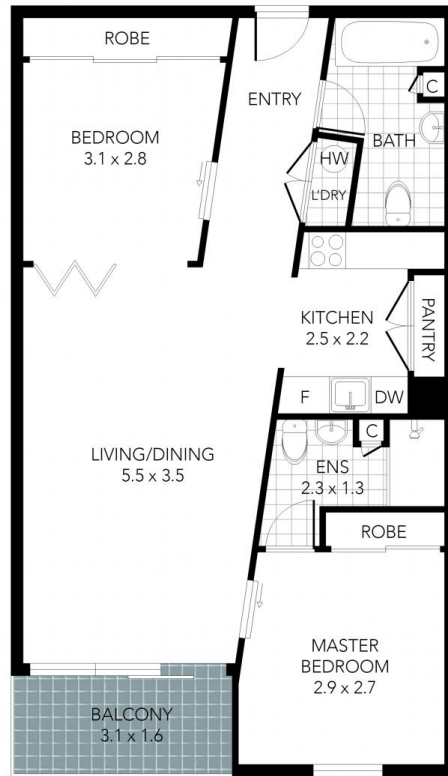
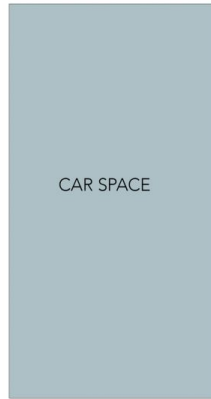
: <https://www.innerrealestate.com.au/sale/vic/inner-city/melbourne/residential/apartment/6139357>



**Anthony Cimino**  
+61 3 9804 5551



**Jonathan Mallas**  
+61 3 9804 5551



THIS FLOOR PLAN IS NOT TO SCALE. MEASUREMENTS ARE INDICATIVE AND IN METRES. VEGETATION IS PLACED FOR ILLUSTRATIVE PURPOSES ONLY.  
THIS PLAN SHOULD NOT BE RELIED UPON. INTERESTED PARTIES SHOULD MAKE THEIR OWN ENQUIRIES.



THIS FLOOR PLAN IS NOT TO SCALE. MEASUREMENTS ARE INDICATIVE AND IN METRES. VEGETATION IS PLACED FOR ILLUSTRATIVE PURPOSES ONLY.  
THIS PLAN SHOULD NOT BE RELIED UPON. INTERESTED PARTIES SHOULD MAKE THEIR OWN ENQUIRIES.