



141/538 Little Lonsdale Street Melbourne VIC

2 1 1

Generous dimensions and a light-filled corner position pair with striking effect in this spacious Dockside Tower apartment.

This neat 2-bedroom domain rests in the heart of the CBD, a short walk to Southern Cross Station and tram stops, the Spencer Outlet Centre and Melbourne's must-visit cafes, bars and restaurants.

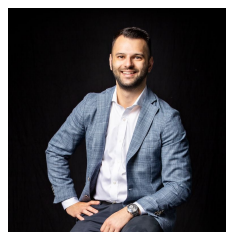
It features a secure undercover car park and a calming city vista from the covered balcony capturing the green of Flagstaff Gardens to the north.

Walk to the gardens for leafy downtime and to the iconic Queen Victoria Market beyond for a smorgasbord of fresh produce.

The interior features a spacious kitchen with a stainless steel oven and gas cooktop, generous storage and a desirable breakfast bench.

A central semi-ensuite continues the sizeable theme,

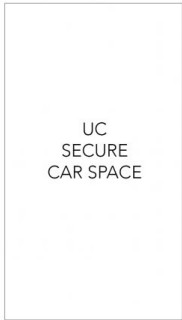
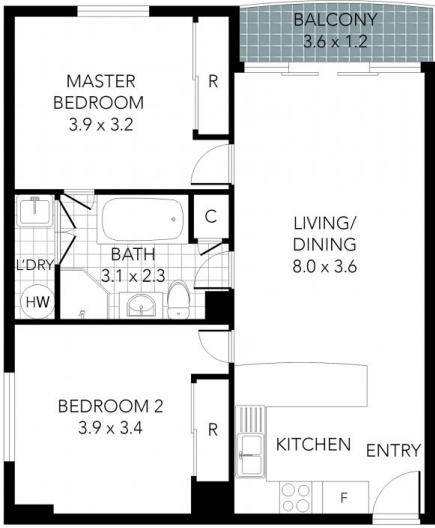
View : <https://www.innerrealestate.com.au/sale/vic/inner-city/melbourne/residential/apartment/6139390>



Anthony Cimino
+61 3 9804 5551



Jonathan Mallas
+61 3 9804 5551



(NOT IN POSITION)

THIS FLOOR PLAN IS NOT TO SCALE. MEASUREMENTS ARE INDICATIVE AND IN METRES. VEGETATION IS PLACED FOR ILLUSTRATIVE PURPOSES ONLY. THIS PLAN SHOULD NOT BE RELIED UPON. INTERESTED PARTIES SHOULD MAKE THEIR OWN ENQUIRIES.



THIS FLOOR PLAN IS NOT TO SCALE. MEASUREMENTS ARE INDICATIVE AND IN METRES. VEGETATION IS PLACED FOR ILLUSTRATIVE PURPOSES ONLY. THIS PLAN SHOULD NOT BE RELIED UPON. INTERESTED PARTIES SHOULD MAKE THEIR OWN ENQUIRIES.