



**INNER REAL ESTATE
NEXTRE**

COVID-19 Policy

Private Inspections Permitted

- Book an Inspection**
Bookings are essential as all inspections are private and contact details required.
- Limited to Private Inspections**
Purchaser/tenant may be accompanied by 10 others from two households only.
- Hand Sanitiser/ Face Mask**
Face mask to be worn at all times and hand sanitiser will be provided upon entry.
- Outside 25km radius**
Attendees may travel beyond 25km radius for the purpose of attending a private inspection.

Submit an enquiry and a member of our team will gladly guide you through the process.



601/22 Coromandel Place Melbourne VIC

2 🏠 1 🛏

****UNDER OFFER****

Experience the energy of inner-city laneway living with this sleek 2-bedroom apartment in the heart of Melbourne's CBD.

This secure and sparkling urban hideaway rests at the epicentre of the action, surrounded by award-winning restaurants, cafés, universities, boutique shopping and transport.

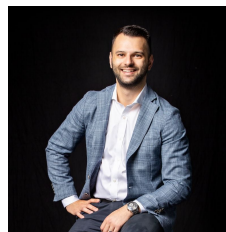
Fall in love with the presentation, savour the privacy and enjoy the walk-to-everything lifestyle on offer.

The modern interior showcases a sparkling kitchen dressed in stainless steel, including a gas cooktop, a dishwasher, and a stainless steel benchtop and splashback.

A window-walled open-plan living area is flanked by a broad balcony, while bedrooms with mirrored built-in robes share a central bathroom and laundry.

Video intercom offers secure entry; while lift access, split

View : <https://www.innerrealestate.com.au/sale/vic/inner-city/melbourne/residential/apartment/6139399>



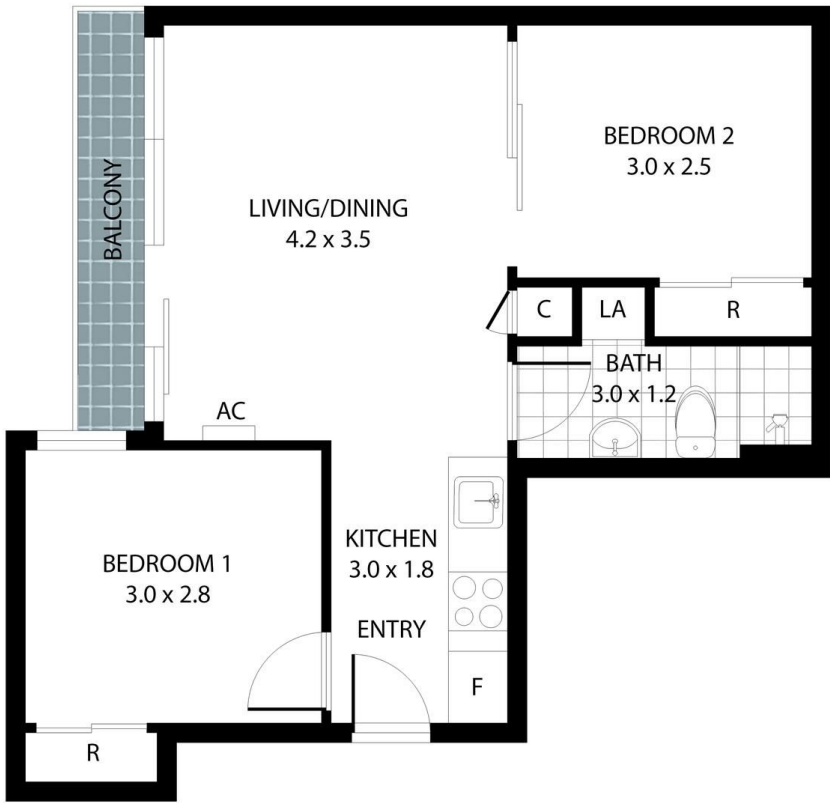
Anthony Cimino
+61 3 9804 5551



Jonathan Mallas
+61 3 9804 5551



THIS FLOOR PLAN IS NOT TO SCALE. MEASUREMENTS ARE INDICATIVE AND IN METRES. VEGETATION IS PLACED FOR ILLUSTRATIVE PURPOSES ONLY. THIS PLAN SHOULD NOT BE RELIED UPON. INTERESTED PARTIES SHOULD MAKE THEIR OWN ENQUIRIES.



THIS FLOOR PLAN IS NOT TO SCALE. MEASUREMENTS ARE INDICATIVE AND IN METRES. VEGETATION IS PLACED FOR ILLUSTRATIVE PURPOSES ONLY. THIS PLAN SHOULD NOT BE RELIED UPON. INTERESTED PARTIES SHOULD MAKE THEIR OWN ENQUIRIES.