



**INNER REAL ESTATE
NEXTRE**

Private Inspections Made Easy

- Book**
Click "Book an Inspection Time" to select a time. Alternatively click "Contact Agent" and you will be sent a link to the online booking system.
- Inspect**
Our friendly team of Sales and Leasing agents will take you on a private inspection of the property at a time that suits your schedule.
- Update**
By registering you confirm your place at the inspection. You will immediately be informed of any changes and updates to the property including price.



1208/555 Flinders Street Melbourne VIC

1 1

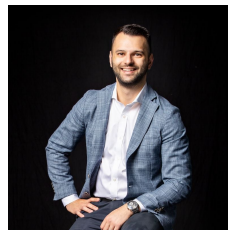
Steps to the Yarra in the heart of the CBD, this Northbank Place apartment with a bold city view offers prime inner-city living.

This is one of Melbourne's most accessible locations, prized for its proximity to transport, riverside dining, Southbank's South Wharf, universities, the Crown Casino and Entertainment Complex and more.

It rises high above Melbourne's iconic Flinders Street, with a full-width northerly-facing covered balcony, perfect for soaking up the city surrounds.

The open-plan interior features window-walled living, a seamless indoor-outdoor connection, and a generous bedroom with a mirrored built-in robe.

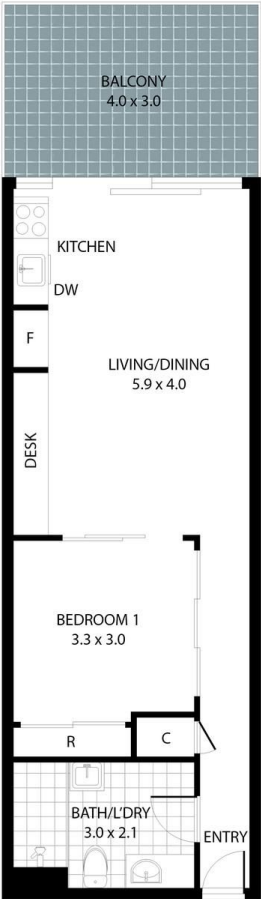
Price : \$ 305,000
Building Size : 50.8 sqm
View : <https://www.innerrealestate.com.au/sale/vic/inner-city/melbourne/residential/apartment/6139401>



Anthony Cimino
+61 3 9804 5551



Jonathan Mallas
+61 3 9804 5551



THIS FLOOR PLAN IS NOT TO SCALE. MEASUREMENTS ARE INDICATIVE AND IN METRES. VEGETATION IS PLACED FOR ILLUSTRATIVE PURPOSES ONLY.
THIS PLAN SHOULD NOT BE RELIED UPON. INTERESTED PARTIES SHOULD MAKE THEIR OWN ENQUIRIES.



THIS FLOOR PLAN IS NOT TO SCALE. MEASUREMENTS ARE INDICATIVE AND IN METRES. VEGETATION IS PLACED FOR ILLUSTRATIVE PURPOSES ONLY.
THIS PLAN SHOULD NOT BE RELIED UPON. INTERESTED PARTIES SHOULD MAKE THEIR OWN ENQUIRIES.