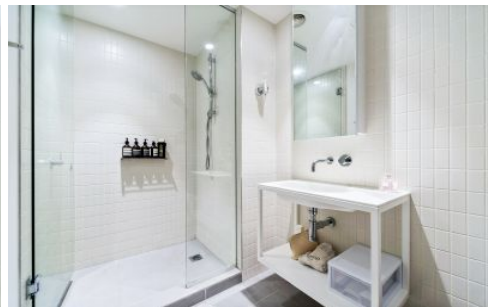




# INNER REAL ESTATE NEXTRE



**Level 15/1509/35 Albert Road Melbourne VIC**

1 1 1

A perfect opportunity to secure a unique apartment in the popular Emerald building.

This outstanding apartment offers, open plan living area with a quality kitchen boasting Miele appliances. The light filled lounge offers floor to ceiling double glazed windows and leads to a private balcony.

Additional features include European laundry, split system heating and cooling, video intercom, a secure car space and storage cage.

The Emerald is in an ideal location. Close to trams, parks and the CBD. It offers a grand entrance, cosy lounge area and access to the roof top garden which offers spa, bbq facilities and spectacular views to the Albert Park Lake and the city.

**View :** <https://www.innerrealestate.com.au/lease/vic/inner-city/melbourne/residential/apartment/6139406>



**Maha Yehia**  
**0448 019 444**



**Maya Angela**  
**+61 3 9804 5551**

