



1 Guild Avenue Noble Park VIC

3 2 2

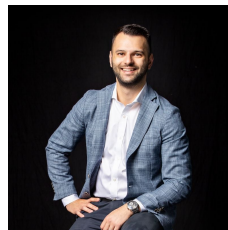
Step up in style with this modern home in a quiet pocket within easy reach of everything, including green open spaces, transport, schools and business centres including Dandenong.

This dual-level design rests on a compact 341 sqm (approx) corner allotment at the entrance to a no-through road, doors to walking paths and walking distance to Ross Reserve's ovals, playgrounds and athletics track.

It's well presented, irresistibly low maintenance and features 2 living rooms and a desirable ground-floor master suite.

Dine alfresco on a generous deck beneath a shade sail and enjoy a seamless indoor-outdoor flow to a sparkling ground-floor kitchen.

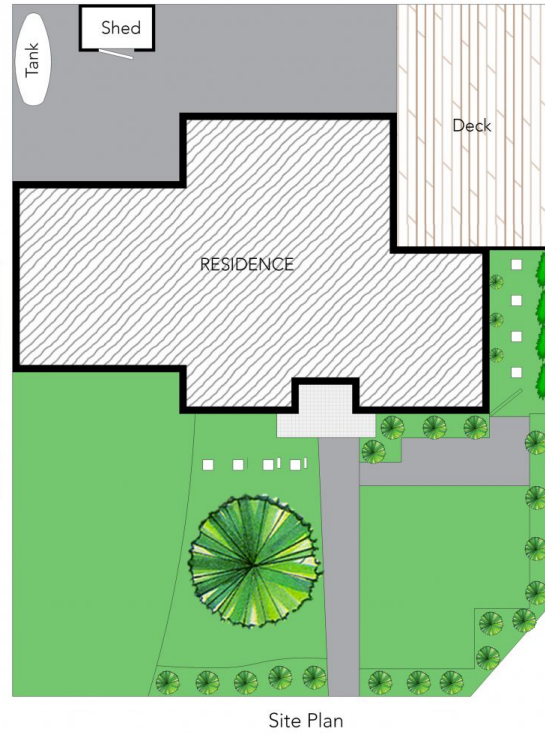
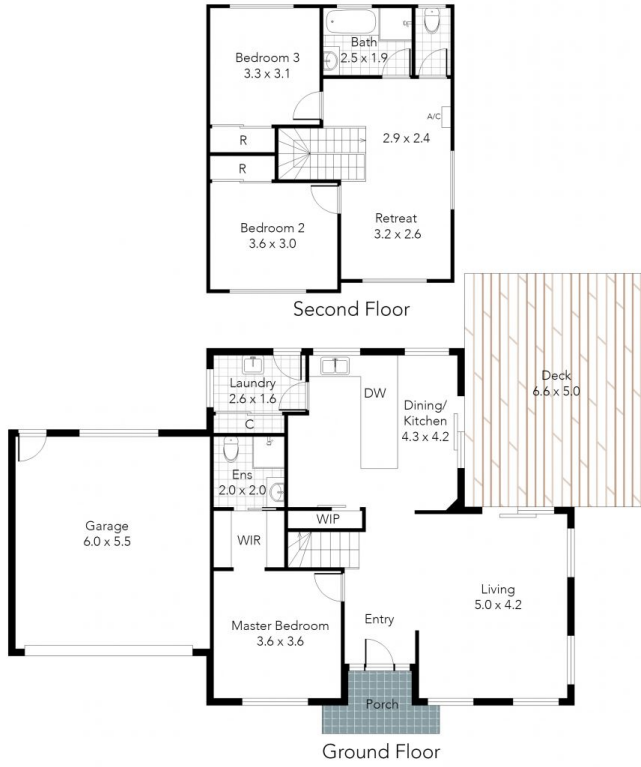
Land Size : 341 sqm
View : <https://www.innerrealestate.com.au/sale/vic/south-east/noble-park/residential/house/6139494>



Anthony Cimino
+61 3 9804 5551



Jonathan Mallas
+61 3 9804 5551



THIS FLOOR PLAN IS NOT TO SCALE. MEASUREMENTS ARE INDICATIVE AND IN METRES. VEGETATION IS PLACED FOR ILLUSTRATIVE PURPOSES ONLY.
THIS PLAN SHOULD NOT BE RELIED UPON. INTERESTED PARTIES SHOULD MAKE THEIR OWN ENQUIRIES.



THIS FLOOR PLAN IS NOT TO SCALE. MEASUREMENTS ARE INDICATIVE AND IN METRES. VEGETATION IS PLACED FOR ILLUSTRATIVE PURPOSES ONLY.
THIS PLAN SHOULD NOT BE RELIED UPON. INTERESTED PARTIES SHOULD MAKE THEIR OWN ENQUIRIES.