



127/418 St Kilda Road Melbourne VIC

3 2 2

Mesmerizing views and a blue-ribbon location 2km to the CBD unite with this luxury corner apartment high above one of Melbourne's most iconic boulevards.

This 3-bedroom, 2-bathroom domain includes 2 tandem basement car parks and a position with The Princeton building, an award-winning complex where broad balconies enhance a dress-circle lifestyle.

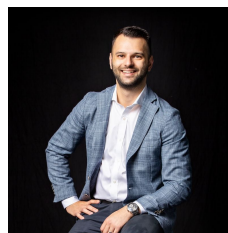
The north-easterly view captures the city skyline, the Shrine of Remembrance, Melbourne Grammar and a canopy of trees lining the Royal Botanic Gardens.

The apartment showcases spacious dimensions throughout and a stunning window-walled master bedroom with a walk-in robe, a full ensuite and a panoramic view.

The Princeton is walking distance to a myriad of recreational facilities including Fawkner Park, the Tan Track, Albert Park Lake, Albert Park Golf Course and MSAC.

Price : \$ 1,115,000

View : <https://www.innerrealestate.com.au/sale/vic/inner-city/melbourne/residential/apartment/6139496>



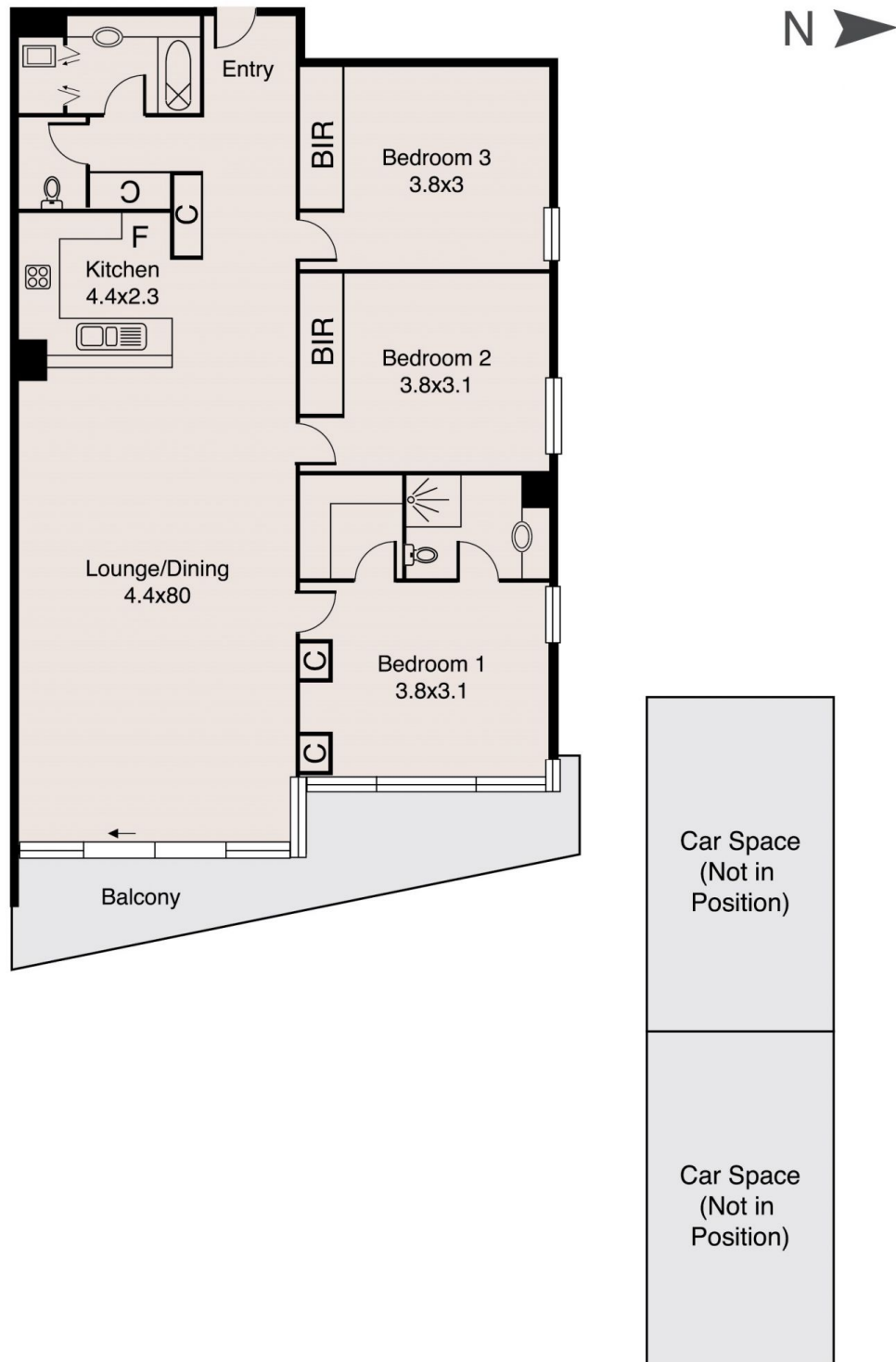
Anthony Cimino
+61 3 9804 5551



Jonathan Mallas
+61 3 9804 5551

Melbourne

127/418 St Kilda Road



ALL INFORMATION CONTAINED HERE IN IS GATHERED FROM SOURCES WE BELIEVE TO BE RELIABLE. HOWEVER WE CANNOT GUARANTEE ITS ACCURACY AND INTERESTED PERSONS SHOULD RELY ON THEIR OWN ENQUIRIES. DIMENSIONS ARE APPROXIMATE.